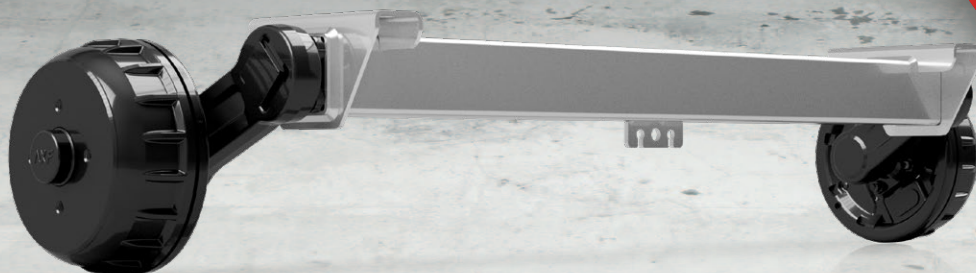


# AXF

AXLES DIVISION

/// IT /// EN

CATALOGO / Catalogue **2019**



# FRENCO

# INDICE / INDEX

**4** / **COME SCEGLIERE UN ASSALE**  
HOW TO CHOOSE AN AXLE

**5** / **ASSALI E SEMIASSALI FRENATI E NON FRENATI**  
BRAKED AND UNBRAKED AXLES AND STUB AXLES

**10** / **STAFFE**  
BRACKET

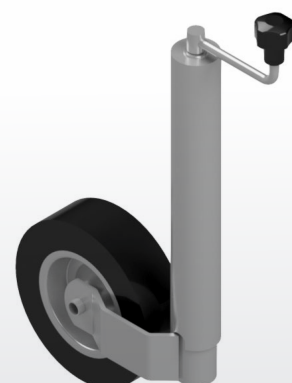
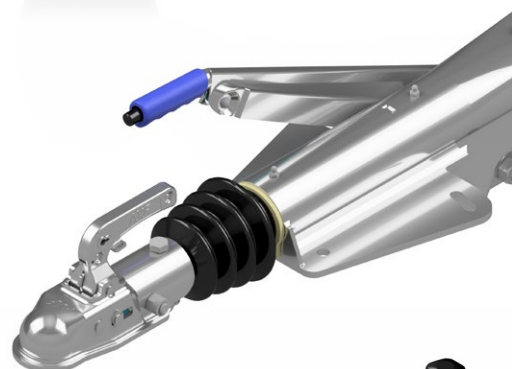
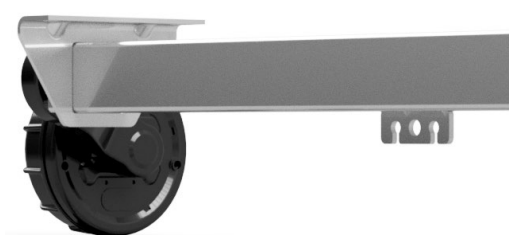
**11** / **ATTACCHI RUOTA**  
WHEEL CONNECTION P.C.D.

**12** / **CAVI FRENO**  
BOWDEN BRAKE CABLE KIT

**15** / **ATTACCHI SFERICI**  
COUPLING HEAD

**16** / **REPULSORI**  
OVERRUN DEVICES

**18** / **RUOTINI**  
JOCKEY WHEELS





**AXLES DIVISION**

**AXF, LA DIVISIONE FRENCO SPECIALIZZATA  
NELLA PRODUZIONE DI ASSALI, SISTEMI FRENANTI E TIMONI.**

FRENCO è leader nella produzione di masse frenanti per rimorchi agricoli.  
Dal 2010, con l'acquisizione di uno storico brand italiano, nasce il marchio AXF.  
AXF produce assali a torsione, sistemi di frenatura ad inerzia e timoni.  
AXF si pone nel mercato nazionale e internazionale come partner di fiducia,  
garantendo esperienza, qualità, personale qualificato, puntualità di servizio e competitività.  
**I PRODOTTI AXF SONO TUTTI MADE IN ITALY.**

**AXF, THE SPECIALIZED FRONT DIVISION IN THE PRODUCTION  
OF AXLES, BRAKING SYSTEMS AND DRAW BAR.**

FRENCO is leader in the production of brakes for agricultural trailers.  
Since 2010, with the acquisition of a historical italian brand, the axf brand is born.  
AXF produces torsion axles, inertia braking systems and draw bar.  
AXF is in the national and international market as a trusted partner, guaranteeing  
experience, quality, qualified personnel, punctual service and competitiveness.  
**AXF PRODUCTS ARE ALL MADE IN ITALY.**

**FRENCO**

## COME SCEGLIERE UN ASSALE

### DIMENSIONI PER LA SCELTA DI UN ASSALE FRENATO O NON FRENATO

#### PORTATA NOMINALE

La portata nominale a catalogo è il carico massimo ammesso per assale.

Il catalogo fornisce delle linee guida basilari per la scelta di un assale. I dettagli finali necessari per la scelta definitiva di un determinato assale andranno approfonditi con il supporto del nostro dipartimento tecnico.

La seguente sezione "Come scegliere un assale" vi fornirà le informazioni necessarie per individuare il prodotto adatto alla vostra applicazione.

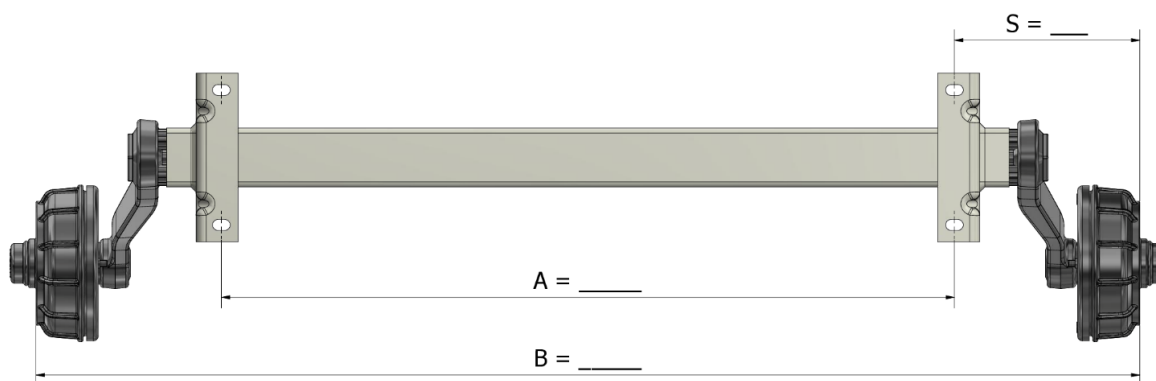
#### COME SCEGLIERE UN ASSALE

Per identificare il tipo di assale a voi necessario, dovrete considerare i seguenti dati:

1. Frenato o non frenato
2. Portata
3. Attacco ruota
4. Interasse staffe, quota "A"
5. Carreggiata, quota "B"
6. Asse singolo o due assali (tandem)

Su richiesta: attacco ruota non standard, inclinazione bracci diversi.

Per qualsiasi chiarimento non esitate a contattare il nostro ufficio tecnico.



## HOW TO CHOOSE AN AXLE

### MEASURES TO CHOOSE AXLES DIMENSIONI WITH OR WITHOUT BRAKES

#### CARRING CAPACITIES

The carrying capacity described in this catalogues is the maximum load specified for axle.

The catalogue only describes broad guidelines for axles selection. The detailed final axle selection should be performed with the help of our technical department.

The following selection "How to choose an axle" will provide the general information you need to identify a suitable product for your application.

#### HOW TO CHOOSE AN AXLE

In order to identify the correct type of axle you require please consider:

1. Braked or not braked
2. Loading capacity
3. Wheel fixing type
4. Bracket distance, A dimension
5. Track, B dimension
6. Single axle or two axles (tandem)

On request: not standard wheel fixing, different arm angle.

For any other requirement please contact our technical department.



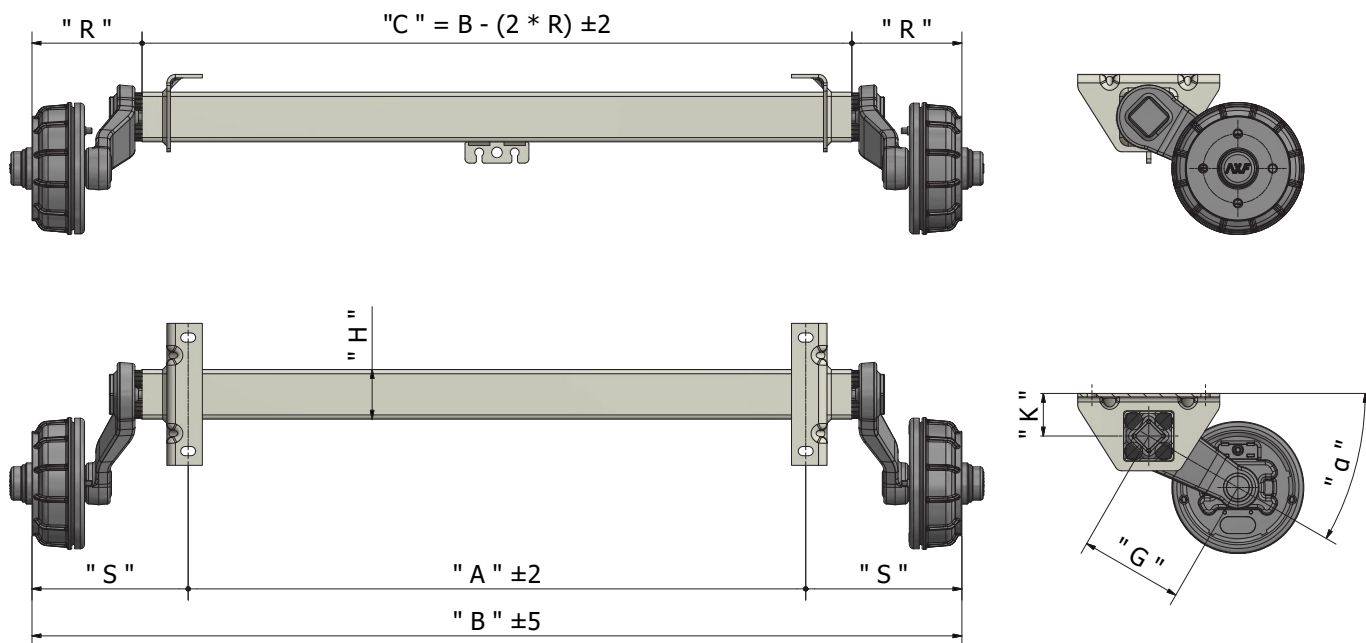
ASSALI E SEMIASSALI  
FRENATI  
E NON FRENATI

BRAKED  
AND UNBRAKED  
AXLES AND  
STUB AXLES

**AXF**

AXLES DIVISION

## ASSALI FRENATI BRAKED AXLES



### ASSALI FRENATI BRAKED AXLES

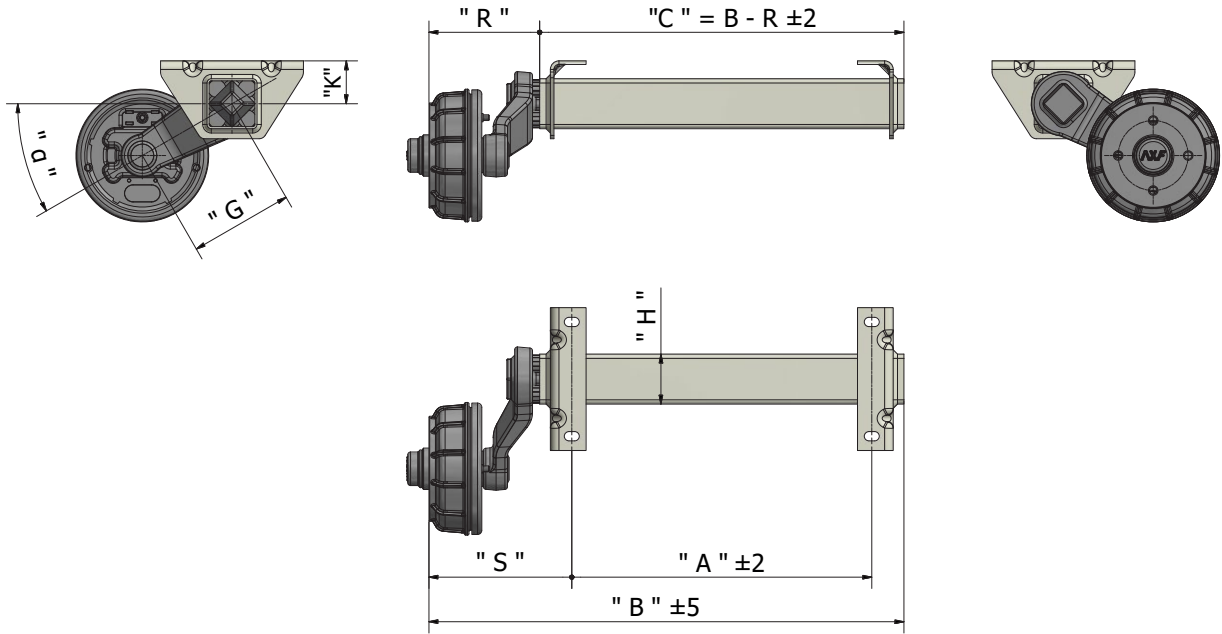
PORTATA LOAD	FRENO BRAKE	$\alpha$	G	K	A min	B min	OFFSET *	H	R	S min	S max	STAFFE BRACKET	ATACCO** P.C.D.**
750	160x35	22°	145	60	390	1020	0/+30	Q60	155	140	315	A	056 - 058
1000	160x35	30°	145	60	290	1030	0/+30	Q70	155	140	370	A	056 - 058 - 066
1500	200x50	30°	160	60	540	1300	+15/+40	Q80	185	225	380	B	058 - 066 - NS - 093
1800	250x40	30°	160	60	450	1320	+20/+45	Q80	195	240	435	B	066 - NS - 093 - LR
2500	250x60	30°	200	55	1010	1630	10/+30	Q80	200	240	310	C	093 - 160
2500	250x60	30°	200	55	1030	1650	10/+30	Q80	215	255	310	C	NS - LR
3500	305x80	30°	200	70	880	1520	-10/+20	Q100	200	245	320	D	160

\* CONSIGLIATO / RECOMMENDED

\*\* ALTRI ATTACCHI DISPONIBILI SU RICHIESTA / OTHER P.C.D. AVAILABLE ON REQUEST

Tutte le dimensioni sono in millimetri / All dimensions are in millimetres

STAFFE vedi pag. 10 / BRACKET see p. 10



**SEMIASSALI FRENATI** BRAKED STUB AXLES

PORTATA LOAD	BRAKE	$\alpha$	G	K	A <sub>min</sub>	B <sub>min</sub>	OFFSET *	H	R	S <sub>min</sub>	S <sub>max</sub>	BRACKET STAFFE	ATACCO** P.C.D.**
750	160x35	22°	145	60	/	520	0/+30	Q60	155	130	315	A	056 - 058 - 066
1000	160x35	30°	145	60	/	530	0/+30	Q70	155	130	330	A	056 - 058 - 066
1500	200x50	30°	160	60	/	660	+15/+40	Q80	185	230	380	B	058 - 066 - NS - 093
1800	250x40	30°	160	60	/	670	+20/+45	Q80	195	240	435	B	066 - NS - 093 - LR
2500	250x60	30°	200	55	/	840	10/+30	Q80	200	240	310	C	093 - 160
2500	250x60	30°	200	55	/	850	10/+30	Q80	215	255	310	C	NS - LR
3500	305x80	30°	200	70	/	770	-10/+20	Q100	200	240	320	D	160

\* CONSIGLIATO / RECOMMENDED

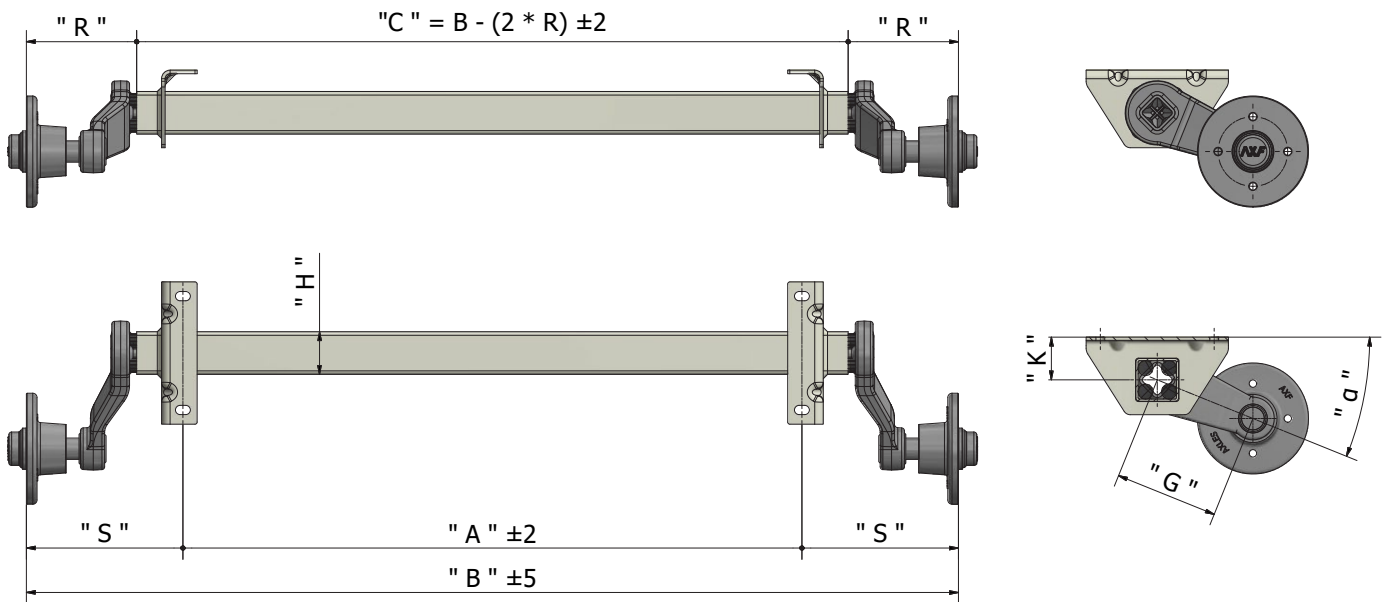
\*\* ALTRI ATTACCHI DISPONIBILI SU RICHIESTA / OTHER P.C.D. AVAILABLE ON REQUEST

Tutte le dimensioni sono in millimetri / All dimensions are in millimetres

STAFFE vedi pag. 10 / BRACKET see p. 10



## ASSALI NON FRENATI UNBRAKED AXLES



### ASSALI NON FRENATI UNBRAKED AXLES

LOAD PORTATA	$\alpha$	G	K	A min	B min	OFFSET*	H	R	S min	S max	BRACKET STAFFE	P.C.D.** ATACCO**
500	30°	145	60	200	820	0/+30	Q55	145	130	310	A	056 - 058
750	22°	145	60	400	1030	0/+30	Q60	150	140	315	A	056 - 058
900	22°	145	60	280	1020	+20/+30	Q60	155	145	370	A	056 - 058 - 066
1100	30°	160	60	490	1090	+20/+30	Q70	185	170	300	A	056 - 058
1600	30°	160	60	600	1310	+25/+45	Q80	185	225	355	B	058 - 066 - NS

\* CONSIGLIATO / RECOMMENDED

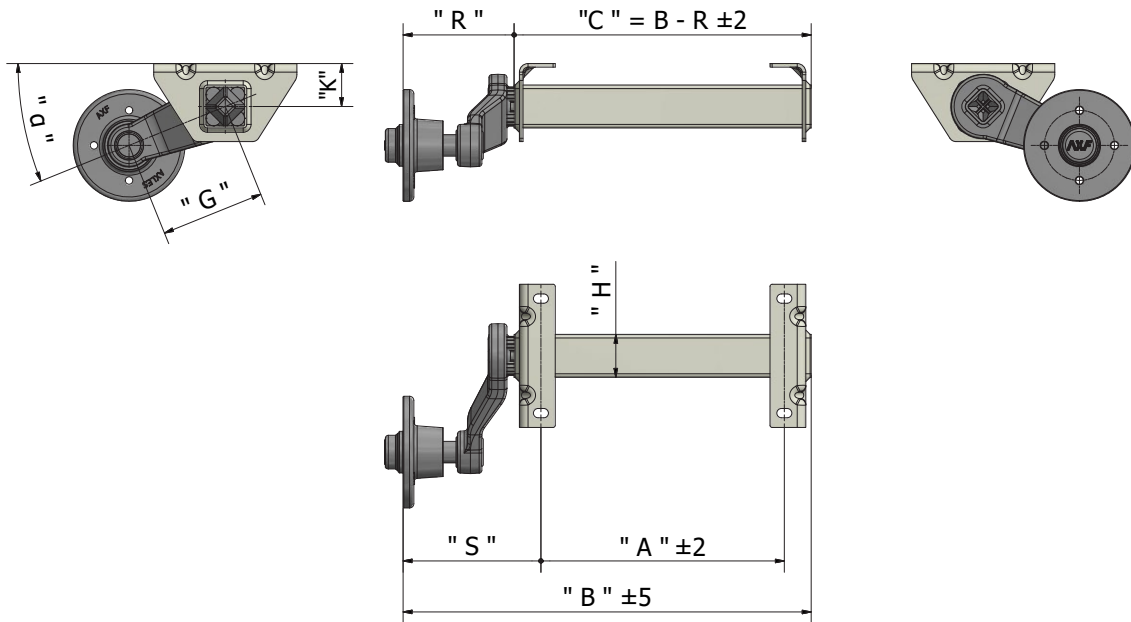
\*\* ALTRI ATTACCHI DISPONIBILI SU RICHIESTA / OTHER P.C.D. AVAILABLE ON REQUEST

Tutte le dimensioni sono in millimetri / All dimensions are in millimetres  
STAFFE vedi pag. 10 / BRACKET see p. 10





**SEMIASSALI NON FRENATI**  
UNBRAKED STUB AXLES



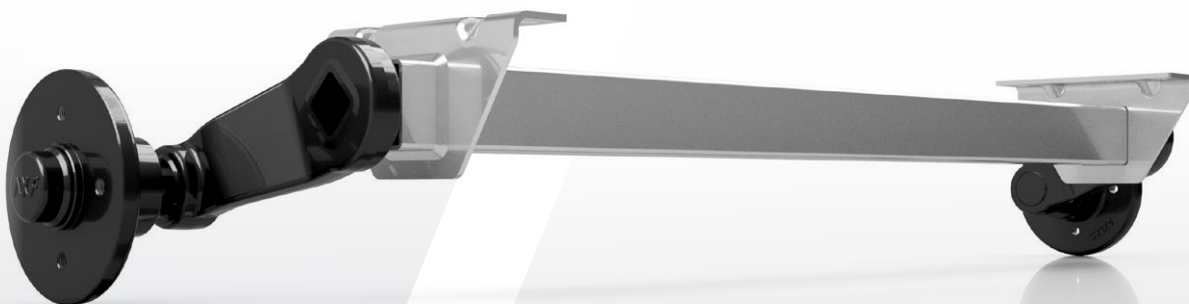
**SEMIASSALI NON FRENATI** UNBRAKED STUB AXLES

LOAD PORTATA	$\alpha$	G	K	A min	B min	OFFSET*	H	R	S min	S max	BRACKET STAFFE	P.C.D.** ATACCO**
500	30°	145	60	/	420	0/+30	Q55	145	120	310	A	056 - 058
750	22°	145	60	/	530	0/+30	Q60	155	130	315	A	056 - 058
900	22°	145	60	/	520	+20/+30	Q60	155	130	370	A	056 - 058 - 066
1100	30°	160	60	/	550	+20/+30	Q70	185	160	300	A	056 - 058
1600	30°	160	60	/	660	+25/+45	Q80	185	140	355	B	058 - 066 - NS

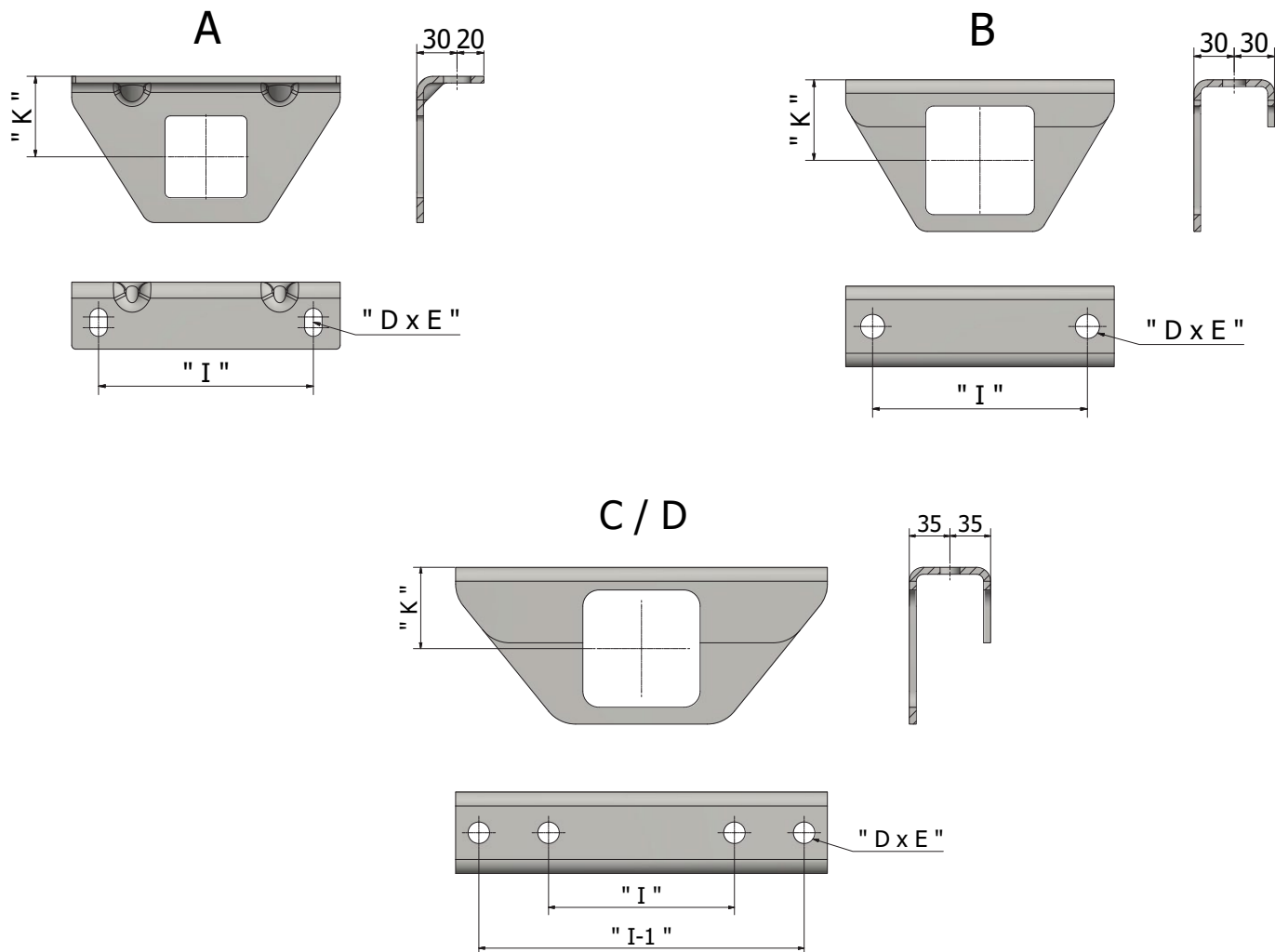
\* CONSIGLIATO / RECOMMENDED

\*\* ALTRI ATTACCHI DISPONIBILI SU RICHIESTA / OTHER P.C.D. AVAILABLE ON REQUEST

Tutte le dimensioni sono in millimetri / All dimensions are in millimetres  
STAFFE vedi pag. 10 / BRACKET see p. 10



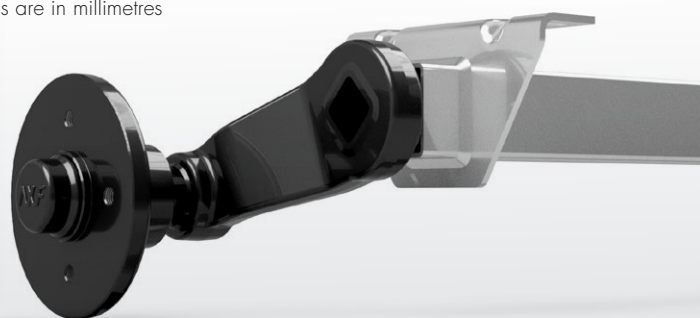
# STAFFE BRACKET

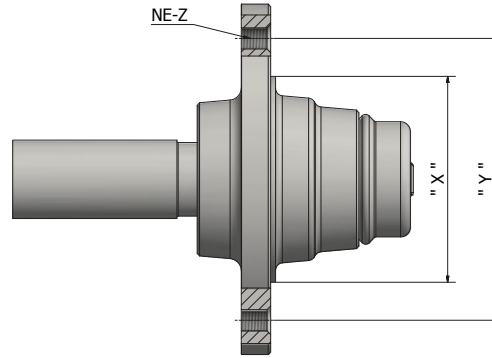
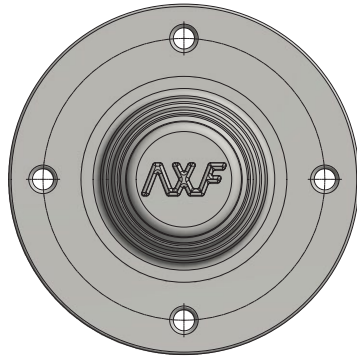


## STAFFE BRACKET

RIF. TYPE	I	I-1	K	DxE
A	160	/	60	21x13
B	160	/	60	18
C	160	280	55	18,5
D	160	280	70	18,5

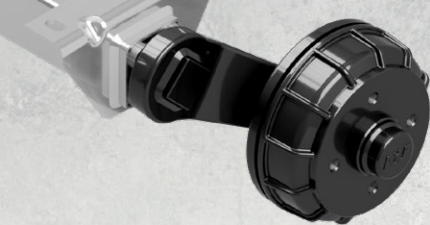
Tutte le dimensioni sono in millimetri / All dimensions are in millimetres





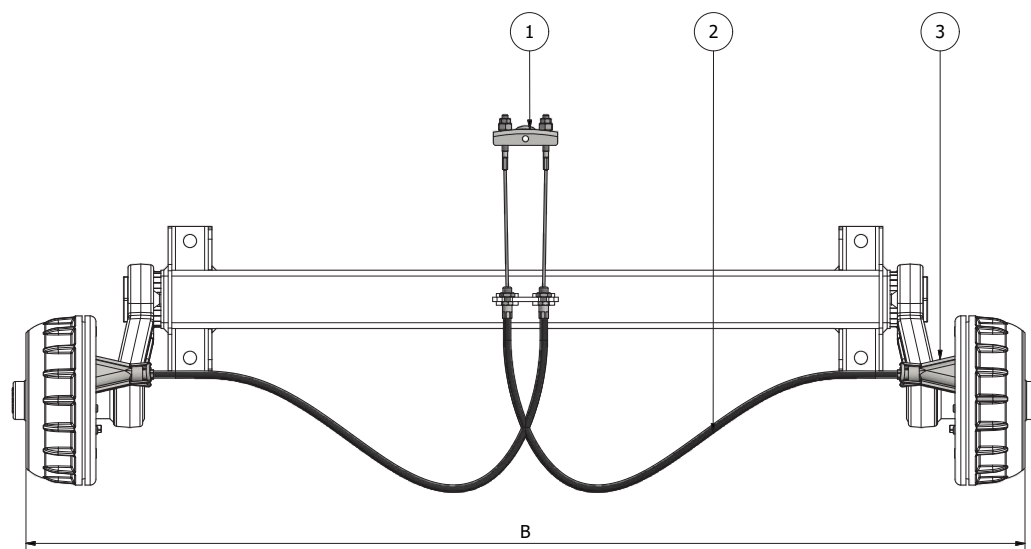
**ATTACCHI RUOTA** WHEEL CONNECTION P.C.D.

TIPO FISSAGGIO P.C.D. TYPE		X x Y / NE-Z	VITE Z x L SCREW Z x L	DADO STUD	MARCHIO BRAND
A	056	56x100/4-M12 Conical seat 60°	Conical screw ring M12x1,5x24		OPEL BMW VOLKSWAGEN
B	058	58x98/4-M12 Conical seat 60°	Conical screw ring M12x1,5x24		FIAT SEAT
C	066	66x112/5-M12 Conical seat 60°	Spherical screw ring M12x1,5x24		MERCEDES
D	NV	66X114,3/4-M12 Conical seat 60°	Conical screw ring M12x1,5x24		NISSAN VANETTE
E	JC	71X114,3/5-M14 Conical seat 60°	Conical screw ring M14x1,5x24		JEEP CHEROKEE
F	84	84X115/4-M10 Conical seat 60°	Conical screw ring M10x1,25x24		/
G	84	84X130/4-M14 Conical seat 60°	Conical screw ring M14x1,5x24		NAUTILUS
H	NS	99X139,7/6-M12 Conical seat 60°	Conical screw ring M12x1,5x24		NISSAN TERRANO NISSAN PATROL
L	SK	107X139,7/5-M12 Conical seat 60°	Conical screw ring M12x1,5x24		SUZUKI
M	DKW	84X140/5-M16 Conical seat 60°	Stud M16x1,5x42	Conical nut M16x1,5	DKW MERCEDES
N	93	93X140/5-M14 Spherical seat R16	Conical screw ring M14x1,5x24		INTERNATIONAL
N	LN	94X140/5-M14 Conical seat 60°	Conical screw ring M14x1,5x24		LADA NIVA
P	LR	114,3X165,1/5-M16 Conical seat 60°	Stud M16x1,5x42	Conical nut M16x1,5	LAND ROVER
Q	160	160X205/6-M18 Spherical seat R16	Stud M18x1,5x49	Spherical nut M18x1,5	/
X	NO STD		Disponibile su richiesta - Available on request -		



## CAVI FRENO ASSE SINGOLO

### BOWDEN BRAKE CABLE KIT SINGLE AXLEKIT



## CAVI FRENO ASSE SINGOLO BOWDEN BRAKE CABLE KIT SINGLE AXLEKIT

CODICE CODE	DESCRIZIONE DESCRIPTION	LUNGHEZZA GUAINA SHEATH LENGTH		CARREGGIATA TRACK LENGTH
		ANTERIORE FRONT	POSTERIORE REAR	
KT27F04591	KIT FUNI SFD-750	750	0	1450
KT27F04553	KIT FUNI SFD-900	900	1451	1700
KT27F04592	KIT FUNI SFD-1050	1050	1701	2000
KT27F04593	KIT FUNI SFD-1200	1200	2001	2400
KT27F04395	KIT FUNI SFD-1300	1300	2400	/

Tutte le dimensioni sono in millimetri / All dimensions are in millimetres

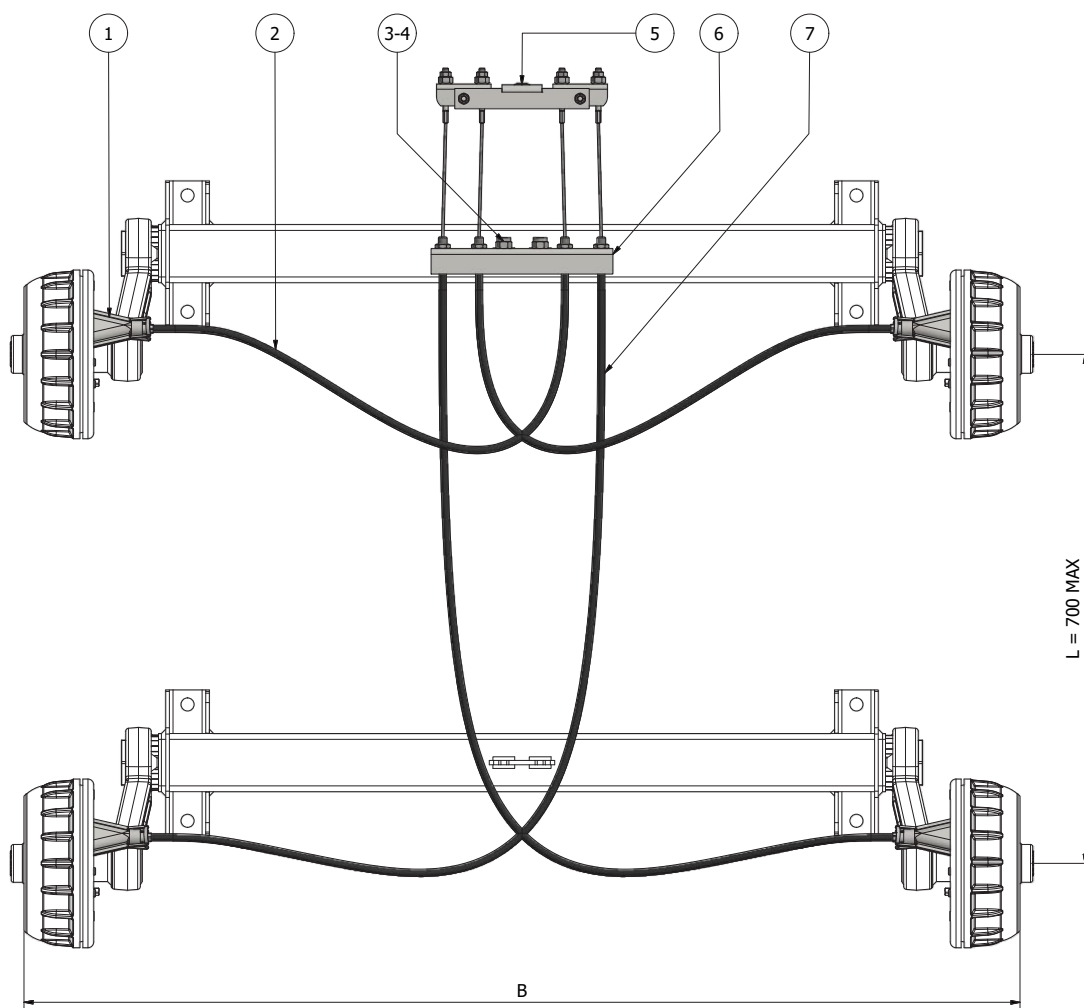
- 1 BILANCIERE - BALANCE BAR
- 2 TIRANTE - BOWDEN BRAKE CABLE
- 3 MEZZO CONO - SHELL

# CAVI FRENO ASSALI IN TANDEM

## BOWDEN BRAKE CABLE KIT TANDEM AXLESKIT



AXLES DIVISION



CAVI FRENO

BOWDEN BRAKE CALBE KIT

### CAVI FRENO ASSALI IN TANDEM BOWDEN BRAKE CABLE KIT TANDEM AXLESKIT

CODICE CODE	DESCRIZIONE DESCRIPTION	LUNGHEZZA GUAINA SHEAT LENGTH		CARREGGIATA TRACK LENGTH	
		ANTERIORE FRONT	POSTERIORE REAR		
KT27F04594	KIT FUNI TANDEM SFD-750/1200	750	1200	0	1450
KT27F04754	KIT FUNI TANDEM SFD-900/1300	900	1300	1451	1700
KT27F04755	KIT FUNI TANDEM SFD-1050/1480	1050	1480	1701	2000
KT27F04812	KIT FUNI TANDEM SFD-1200/1600	1200	1600	2001	2400
KT27F04823	KIT FUNI TANDEM SFD-1480/1750	1480	1750	2601	/

Tutte le dimensioni sono in millimetri / All dimensions are in millimetres

- 1 MEZZO CONO - SHELL
- 2 TIRANTE ANTERIORE - FRONT BOWDEN B.C.
- 3,4 VITI DADI - SCRWWS NUTS
- 5 BILANCIERE - BALANCE BAR
- 6 PIASTRA - PLATE
- 7 TIRANTE POSTERIORE - REAR BOWDEN B.C.





ATTACCHI SFERICI  
REPULSORI  
RUOTINI

COUPLING HEADS  
OVERRUN DEVICES  
JOCKEY  
WHEELS

**AXF**

AXLES DIVISION

Fig. "1"

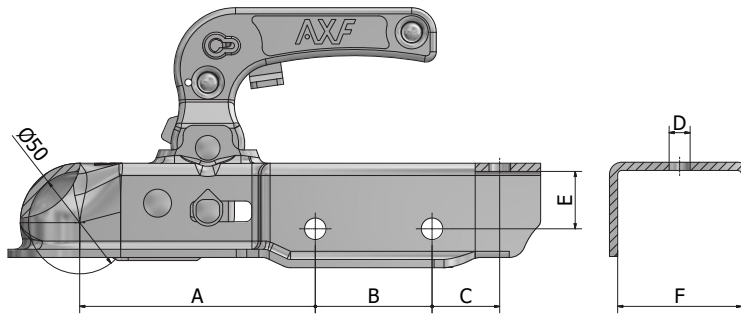


Fig. "2"

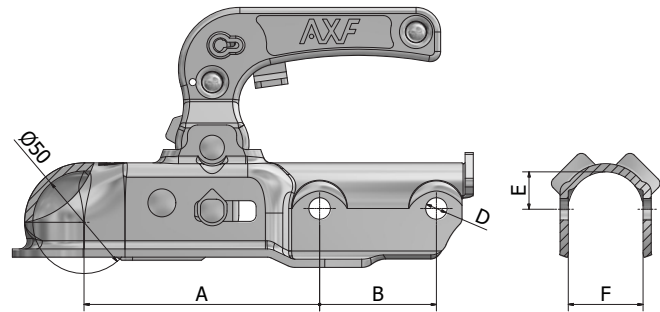
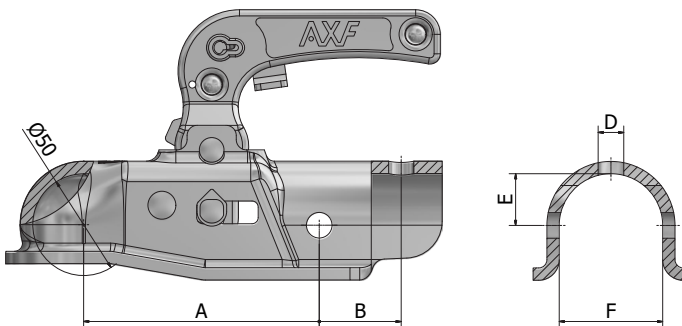
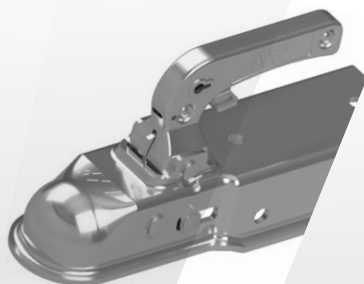


Fig. "3"

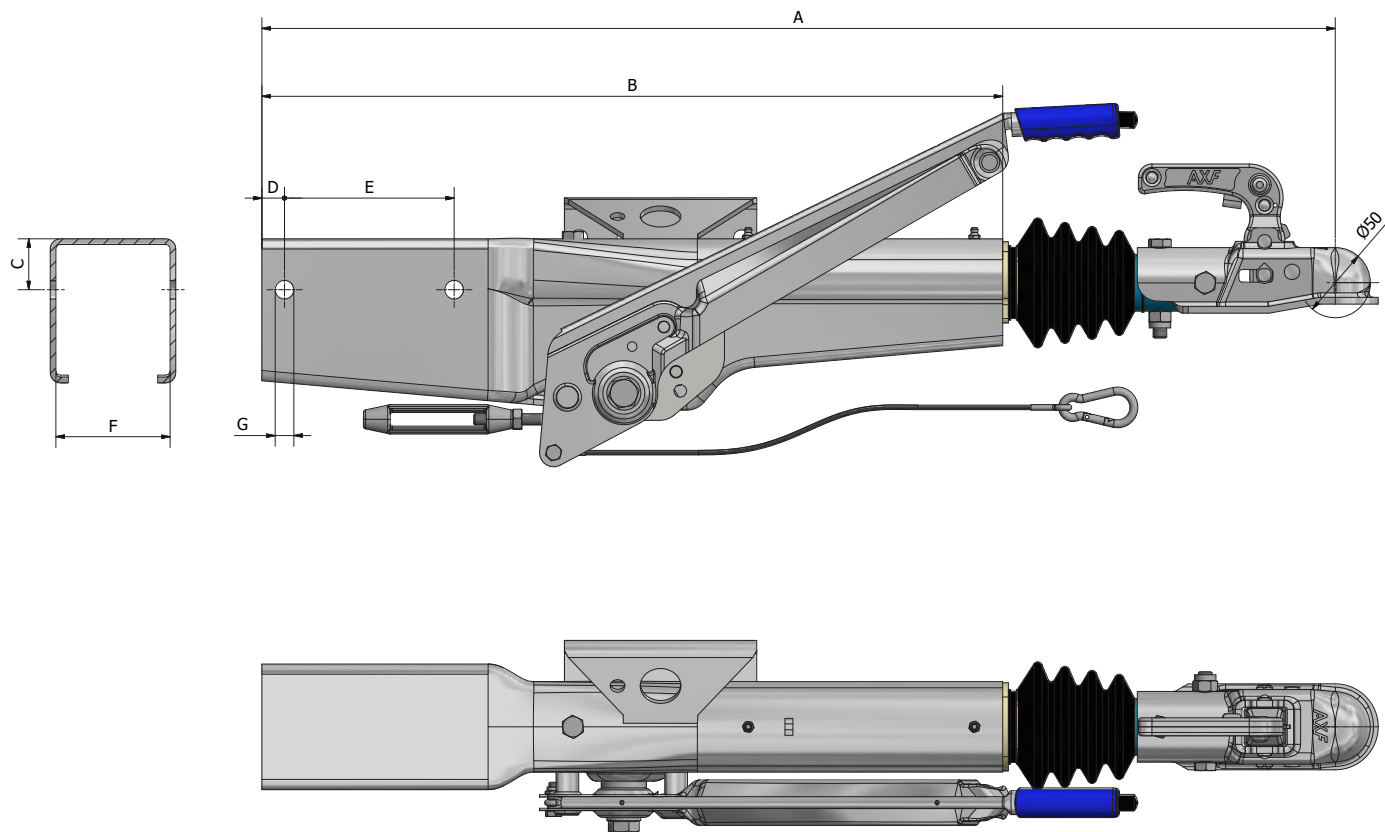


**ATTACCHI SFERICI** COUPLING HEADS

CODICE CODE	TIPO TYPE	FIG.	PORTATA LOAD [Kg]	"S" [Kg]	"D" [Kn]	A [mm]	B [mm]	C [mm]	D [mm]	E [mm]	F [mm]	N. OMOLOGAZIONE APPROVAL NO.
7110A06236	GE 10-5	1	1000	75	9,6	115	57	33	10,5	/	50,5	55R-016475
7110A06237	GE 10-6	1	1000	75	9,6	115	57	33	10,5	25	60,5	55R-016475
7110A06238	GE 10-T	2	1000	75	9,6	115	57	/	10,5	18,5	36,5	55R-016475
7115A06239	GE 15-T	2	1500	100	14,1	115	57	/	10,5	18,5	36,5	55R-016477
7128A06240	GE 25-T	3	2800	120	25,26	115	40	/	12,5	25,25	50,50	55R-016476

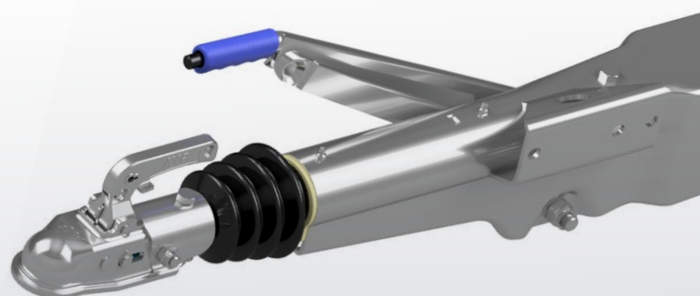


## REPULSORE QUADRO OVERRUN DEVICE SQUARE



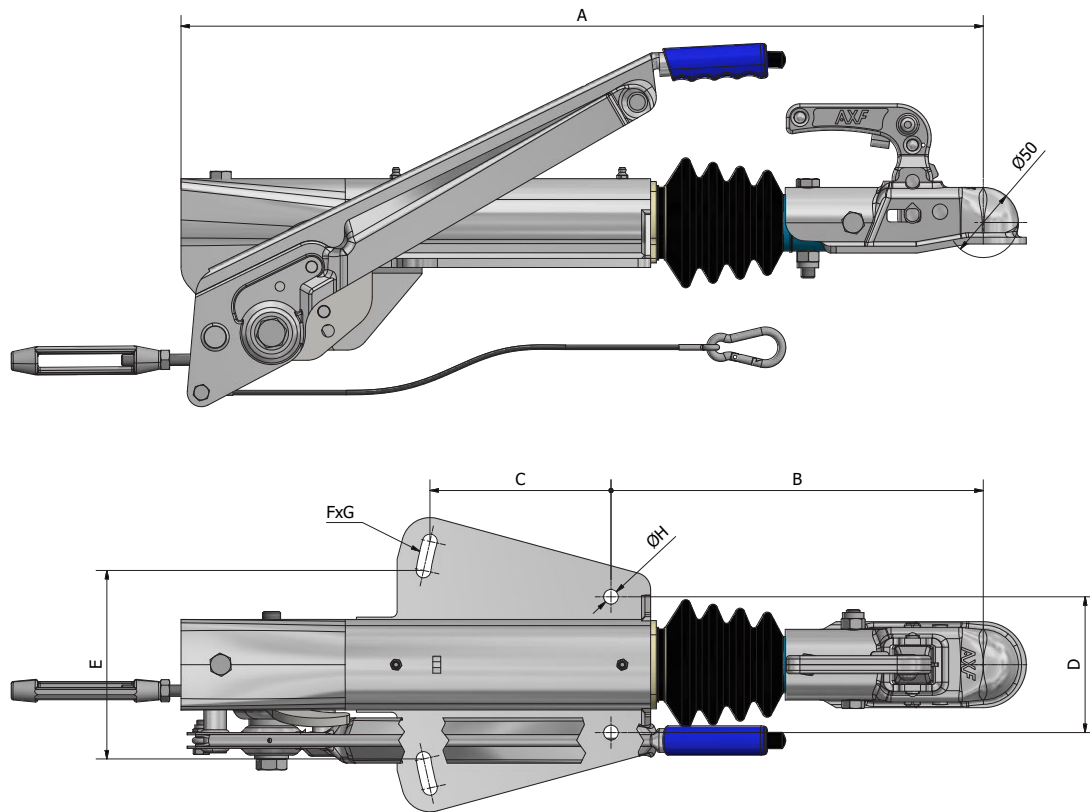
### REPULSORE QUADRO OVERRUN DEVICE SQUARE

CODICE CODE	TIPO TYPE	PORTATA LOAD [Kg]		S [Kg]	D [Kn]	A [mm]	B [mm]	C [mm]	D [mm]	E [mm]	F [mm]	ØG [mm]	N. OMOLOGAZIONE APPROVAL NO.
RR10003460	TQ	650	1000	100	14,06	805	505	35	20	120	71	13,5	55R-016433
RR15003222	TQ	900	1500	100	14,06	805	505	35	20	120	71	13,5	55R-016433
RR28002100	TQ2	1500	2800	100	26,26	945	655	40	20	150	101	16,5	55R-016436





**REPULSORE V**  
OVERRUN DEVICE V



REPULSORI

OVERRUN DEVICES

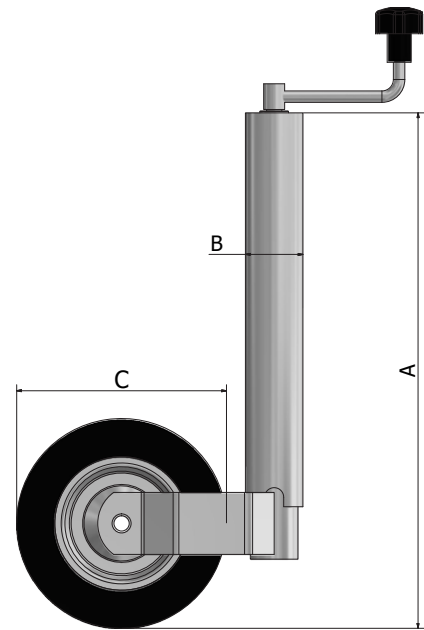
**REPULSORE V** OVERRUN DEVICE V

CODICE CODE	TIPO TYPE	PORTATA LOAD [Kg]	S [Kg]	D [Kn]	A [mm]	B [mm]	C [mm]	D [mm]	E [mm]	FxG [mm]	ØH [mm]	N. OMOLOGAZIONE APPROVAL NO.	
RV10007568	TV	650	1000	100	14,95	605	320	125	100	148	13x18	13	55R-016435
RV15007570	TV	900	1500	100	14,95	605	320	125	100	148	13x18	13	55R-016435
RV18001395	TV3	950	1800	100	16,72	705	325	160	120	166	13x26	13	55R-016426
RV28002099	TV2	1500	2800	100	25,26	705	325	160	120	166	13x26	13	55R-016437



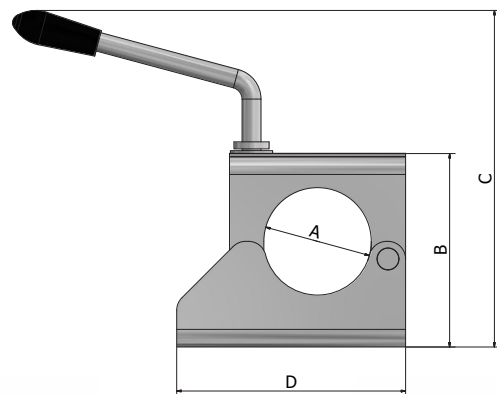
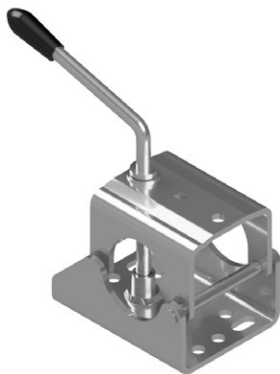


## RUOTINI JOCKEY WHEELS



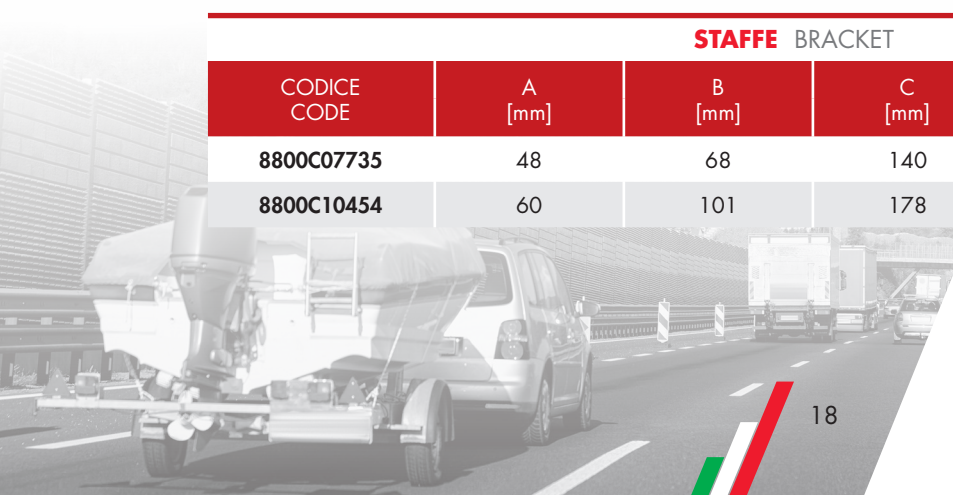
### RUOTINI JOCKEY WHEELS

CODICE CODE	PORTATA LOAD [Kg]	A [mm]		B [mm]	C [mm]	PESO WEIGHT [Kg]
		MIN	MAX			
8800C07739	150	480	730	48	200	4
8800C10453	300	540	760	60	220	9



### STAFFE BRACKET

CODICE CODE	A [mm]	B [mm]	C [mm]	D [mm]	PESO WEIGHT [Kg]
8800C07735	48	68	140	128	1
8800C10454	60	101	178	128	1,5



## R&D / FOCUS

**QUALITÀ, RICERCA E INNOVAZIONE  
CON LA MASSIMA FLESSIBILITÀ.  
IL NOSTRO OBIETTIVO?  
LA COMPLETA SODDISFAZIONE DEL CLIENTE.**

Con la nascita della divisione AXF, Frenco inserisce anche il dipartimento di R&D. L'introduzione del dipartimento R&D ha portato in azienda nuove figure specializzate che con nuovi software sempre all'avanguardia, nuovi strumenti di test, la collaborazione dell'ufficio tecnico e del controllo qualità, convalida i prodotti standard, ne progetta e verifica di nuovi. La continua ricerca di FRESCO della soddisfazione del cliente è stata trasferita anche nella divisione AXF.

AXF si impegna quotidianamente nella cura e soddisfazione della sua clientela anche attraverso il lavoro svolto da R&D.

La clientela, in fase di studio, può avvalersi del supporto di R&D per l'adeguamento di prodotti esistenti o la progettazione di prodotti studiati ad hoc.

**QUALITY, SEARCH AND INNOVATION  
WITH THE MAXIMUM FLEXIBILITY.  
OUR GOALS? THE COMPLETE  
SATISFACTION OF THE CUSTOMER.**

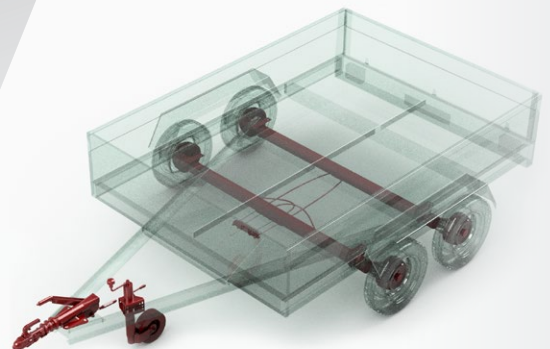
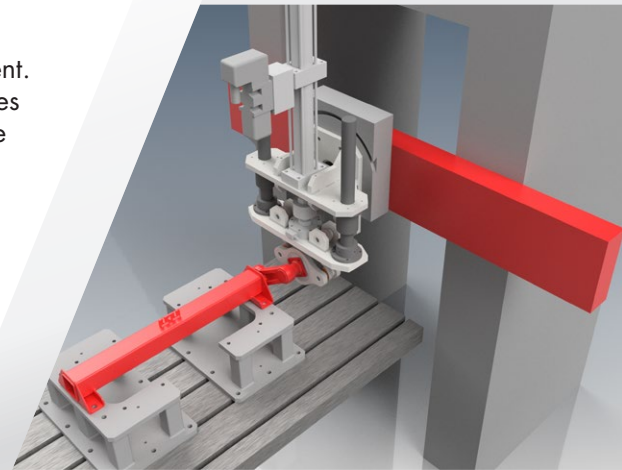
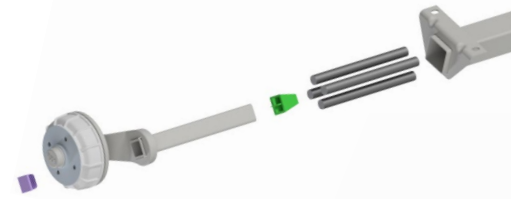
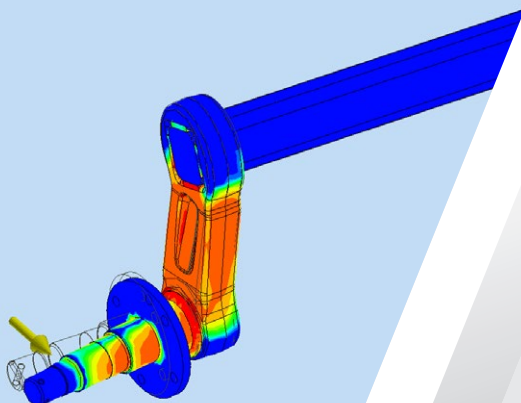
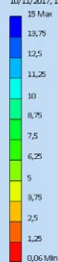
With the birth of the AXF division, Frenco also includes the R&D department. The birth of the R & D department has brought new specialized figures into the company, with new cutting-edge software, new test tools, the collaboration of the technical and quality control department, validating the standard products, designing and verifying new ones.

The continuous search for FRESCO of customer satisfaction has also been transferred to the AXF division.

AXF is committed every day to the care and satisfaction of its customers also through the work done by R&D.

The customers, under study, can make use of the support of R&D for the adaptation of existing products or the design of products studied ad hoc.

Tipo: Fattore di sicurezza  
Unità: cf  
10/11/2017, 11:18:56



The logo consists of the letters 'AXF' in a bold, sans-serif font. The letter 'A' is black, 'X' is red, and 'F' is black. The background is a light gray gradient with a large, dark gray triangular shape on the right side and a red and black triangular shape on the left side.

**AXLES DIVISION**

[www.axf-axles.com](http://www.axf-axles.com)

The logo consists of the word 'FRESCO' in a bold, sans-serif font. The letter 'O' is red, while the other letters are black.

Fresco S.r.l. - Via Indipendenza 5/7 - 25018 Novagli di Montichiari (BS) ITALY  
Tel. +39 030 9981758 - Fax +39 030 9981779 - [info@frecosrl.it](mailto:info@frecosrl.it) - [www.fresco-italy.com](http://www.fresco-italy.com)