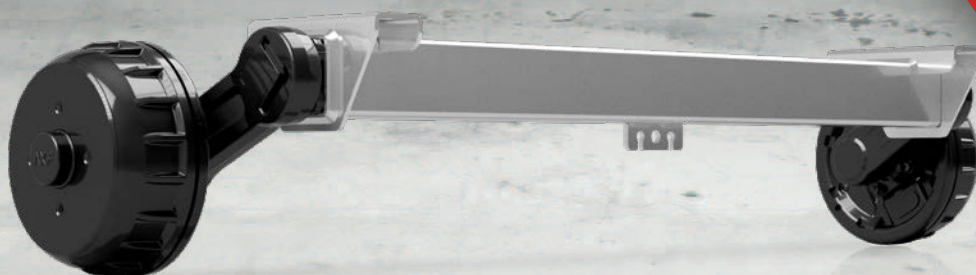


AXF

AXLES DIVISION

/// IT /// EN

CATALOGO / Catalogue **2022**



FRENCO

INDICE / INDEX

4 / **COME SCEGLIERE UN ASSALE**
HOW TO CHOOSE AN AXLE

5 / **ASSALI E SEMIASSALI FRENATI E NON FRENATI**
BRAKED AND UNBRAKED AXLES AND STUB AXLES

10 / **STAFFE**
BRACKETS

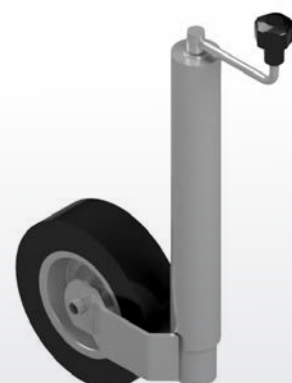
11 / **ATTACCHI RUOTA**
WHEEL P.C.D.

12 / **CAVI FRENO**
BRAKE CABLES

15 / **ATTACCHI SFERICI**
COUPLING HEADS

16 / **REPULSORI**
OVERRUN DEVICES

18 / **RUOTINI**
JOCKEY WHEELS





AXLES DIVISION

**AXF, LA DIVISIONE FRENCO SPECIALIZZATA
NELLA PRODUZIONE DI ASSALI, SISTEMI FRENANTI E REPULSORI.**

FRENCO è leader nella produzione di masse frenanti per rimorchi agricoli.
Dal 2010, con l'acquisizione di uno storico brand italiano, nasce il marchio AXF.
AXF produce assali a torsione, sistemi di frenatura ad inerzia e repulsori.
AXF si pone nel mercato nazionale e internazionale come partner di fiducia,
garantendo esperienza, qualità, personale qualificato, puntualità di servizio e competitività.

I PRODOTTI AXF SONO TUTTI MADE IN ITALY.

**AXF, FRENCO'S DIVISION SPECIALIZED IN THE PRODUCTION
OF AXLES, BRAKING SYSTEMS AND OVERRUN DEVICES.**

FRENCO is a leading company in the production of braking assemblies for agricultural trailers.
The AXF brand was born in 2010 following the acquisition of a historic Italian brand.
AXF produces torsion axles, inertia braking systems and overrun devices.
AXF is a reliable partner on both the national and international markets,
as it ensures experience, quality, qualified personnel, punctual services and competitiveness.

ALL AXF PRODUCTS ARE MADE IN ITALY.

FRENCO

COME SCEGLIERE UN ASSALE

DIMENSIONI PER LA SCELTA DI UN ASSALE FRENATO O NON FRENATO

PORTATA NOMINALE

La portata nominale a catalogo è il carico massimo ammesso per assale.

Il catalogo fornisce delle linee guida basilari per la scelta di un assale. I dettagli finali necessari per la scelta definitiva di un determinato assale andranno approfonditi con il supporto del nostro dipartimento tecnico.

La seguente sezione "Come scegliere un assale" vi fornirà le informazioni necessarie per individuare il prodotto adatto alla vostra applicazione.

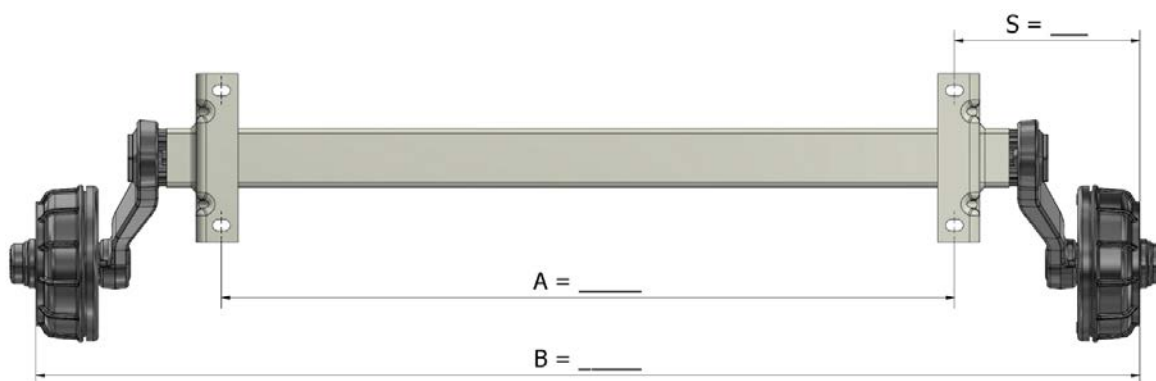
COME SCEGLIERE UN ASSALE

Per identificare il tipo di assale a voi necessario, dovrete considerare i seguenti dati:

1. Frenato o non frenato
2. Portata
3. Attacco ruota
4. Interasse staffe, quota "A"
5. Carreggiata, quota "B"
6. Asse singolo o due assali (tandem)

Su richiesta: attacco ruota non standard, inclinazione bracci diversi.

Per qualsiasi chiarimento non esitate a contattare il nostro ufficio tecnico.



HOW TO CHOOSE AN AXLE

SIZES FOR THE SELECTION OF AN AXLE WITH OR WITHOUT BRAKE

NOMINAL CAPACITY

In the catalog, the nominal capacity is the maximum load allowed per axle.

The catalog provides basic guidelines on how to choose an axle. The final details needed for the final selection of a specific axle will be studied in depth with the support of our technical division.

The following "How to choose an axle" section will provide all the information needed to identify the right product for your application.

HOW TO CHOOSE AN AXLE

The following data must be considered in order to identify the type of axle you need:

1. With or without brake
2. Load capacity
3. Wheel PCD (pitch circle diameter)
4. Bracket distance "A"
5. Track "B"
6. Single axle or double axle (tandem)

On request: non-standard wheel PCD, different arm inclinations.

Do not hesitate to contact our technical office for any further information.



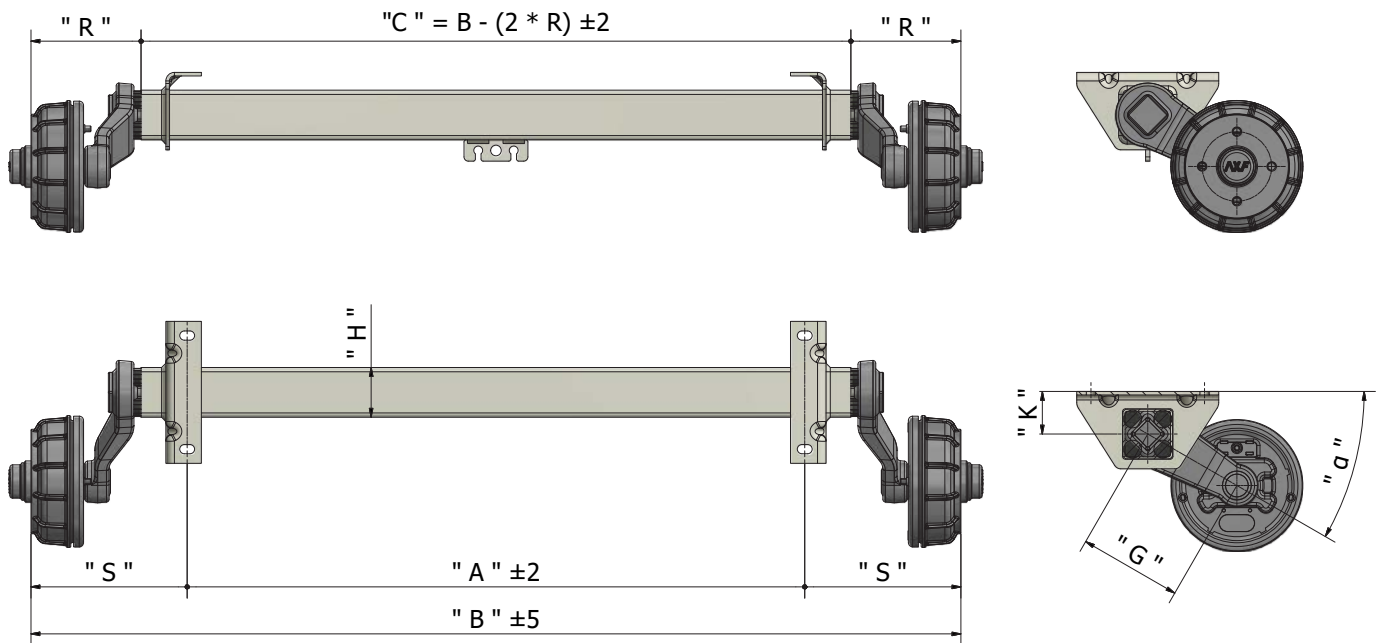
ASSALI E SEMIASSALI
FRENATI
E NON FRENATI

BRAKED
AND UNBRAKED
AXLES AND
STUB AXLES

AXF

AXLES DIVISION

ASSALI FRENATI BRAKED AXLES



ASSALI FRENATI BRAKED AXLES

PORTATA LOAD	FRENO BRAKE	α	G	K	B _{min}	OFFSET *	H	R	S _{min}	S _{max}	STAFFE BRACKETS	ATTACCO** P.C.D.**
750	160x35	22°	145	60	1050	0/+30	Q60	155	135	365	A	056 - 058 - 066
1000	160x35	30°	145	60	1060	0/+30	Q70	155	135	385	A	056 - 058 - 066
1500	200x50	30°	160	60	1320	+15/+40	Q80	185	225	445	B	058 - 066 - NS - 093
1800	250x40	30°	160	60	1340	+20/+45	Q80	195	235	445	B	066 - NS - 093 - LR
2500	250x60	30°	200	55	1240	10/+30	Q100	200	245	505	C	NS - LR - 093 - 160
3500	305x80	30°	200	55 / 70	1550	-10/+20	Q100	200	245	315	C / D	160

* CONSIGLIATO / RECOMMENDED

** ALTRI ATTACCHI DISPONIBILI SU RICHIESTA / OTHER P.C.D. AVAILABLE ON REQUEST

Tutte le dimensioni sono in millimetri / All sizes are expressed in millimeters

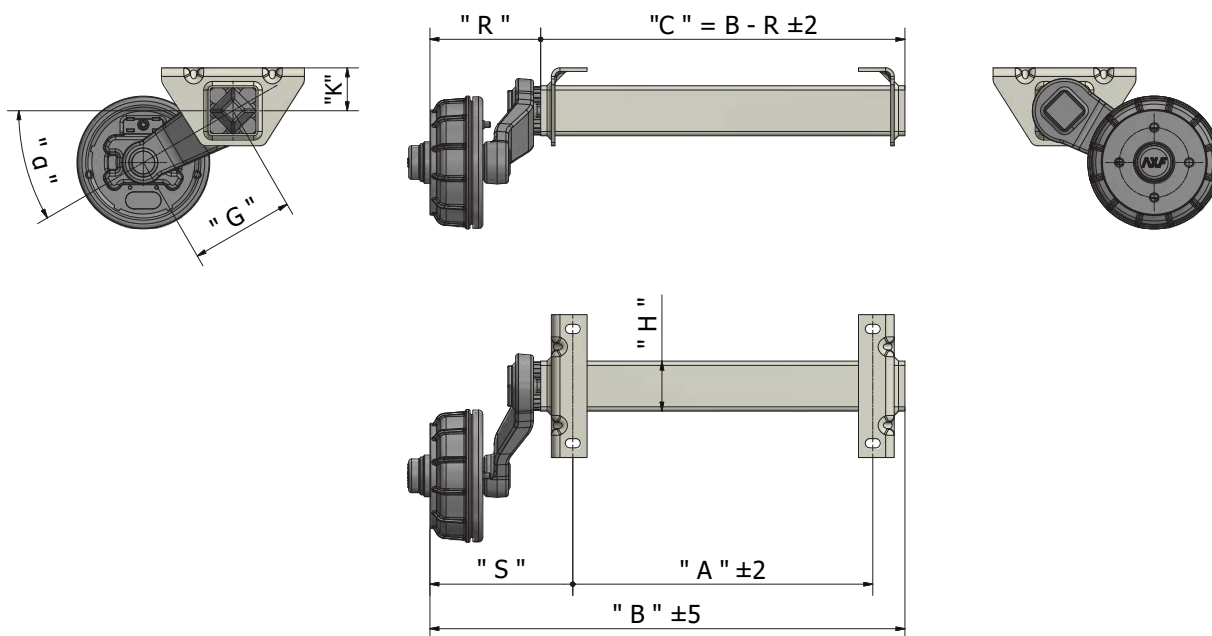
STAFFE vedi pag. 10 / BRACKETS see p. 10

SEMIASSALI FRENATI

BRAKED STUB AXLES



AXLES DIVISION



ASSALI E SEMIASSALI FRENATI

BRAKED AXLES AND STUB AXLES

SEMIASSALI FRENATI BRAKED STUB AXLES

PORTATA LOAD	FRENO BRAKE	α	G	K	B _{min}	OFFSET *	H	R	S _{min}	S _{max}	STAFFE BRACKETS	ATTACCO** P.C.D.**
375	160x35	22°	145	60	520	0/+30	Q60	155	135	365	A	056 - 058 - 066
500	160x35	30°	145	60	530	0/+30	Q70	155	135	385	A	056 - 058 - 066
750	200x50	30°	160	60	660	+15/+40	Q80	185	225	445	B	058 - 066 - NS - 093
900	250x40	30°	160	60	670	+20/+45	Q80	195	235	445	B	066 - NS - 093 - LR
1250	250x60	30°	200	55	620	10/+30	Q100	200	245	505	C	NS - LR - 093 - 160
1750	305x80	30°	200	55 / 70	770	-10/+20	Q100	200	245	315	C / D	160

* CONSIGLIATO / RECOMMENDED

** ALTRI ATTACCHI DISPONIBILI SU RICHIESTA / OTHER P.C.D. AVAILABLE ON REQUEST

Tutte le dimensioni sono in millimetri / All sizes are expressed in millimeters

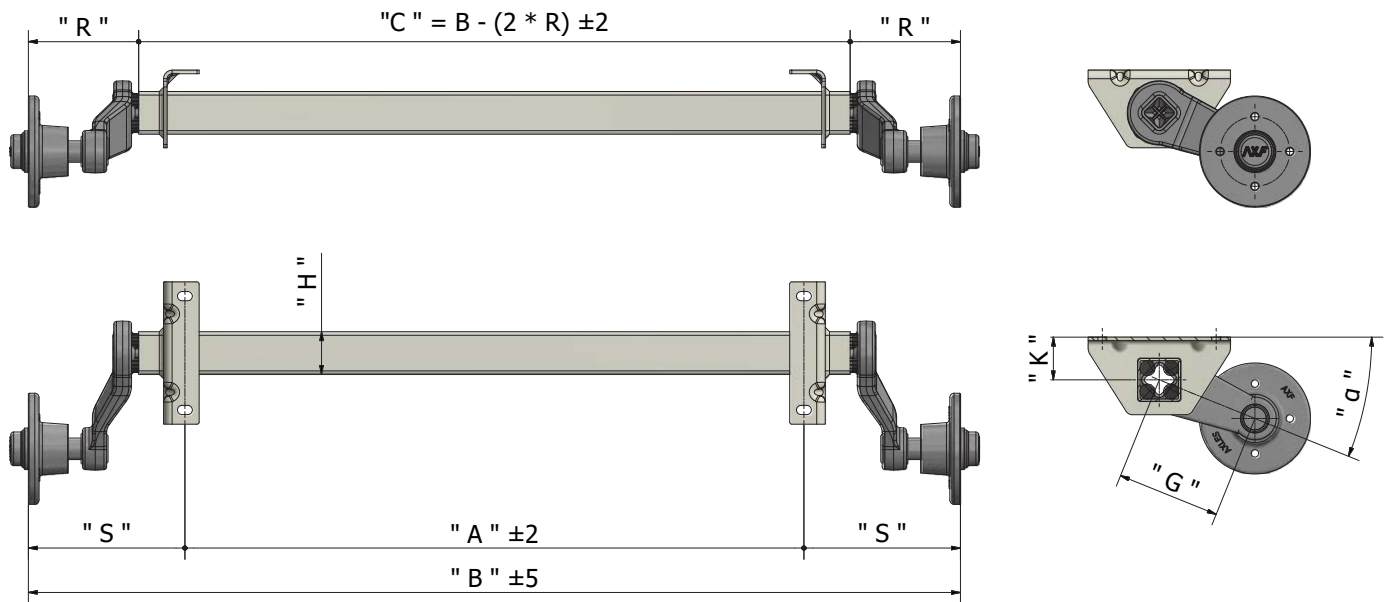
STAFFE vedi pag. 10 / BRACKETS see p. 10



FRENCO



ASSALI NON FRENATI UNBRAKED AXLES



ASSALI NON FRENATI UNBRAKED AXLES

PORTATA LOAD	α	G	K	B min	OFFSET*	H	R	S min	S max	STAFFE BRACKETS	ATTACCO P.C.D
900	22°	145	60	1050	0/+30	Q60	155	135	290	A	056 - 058 - 066

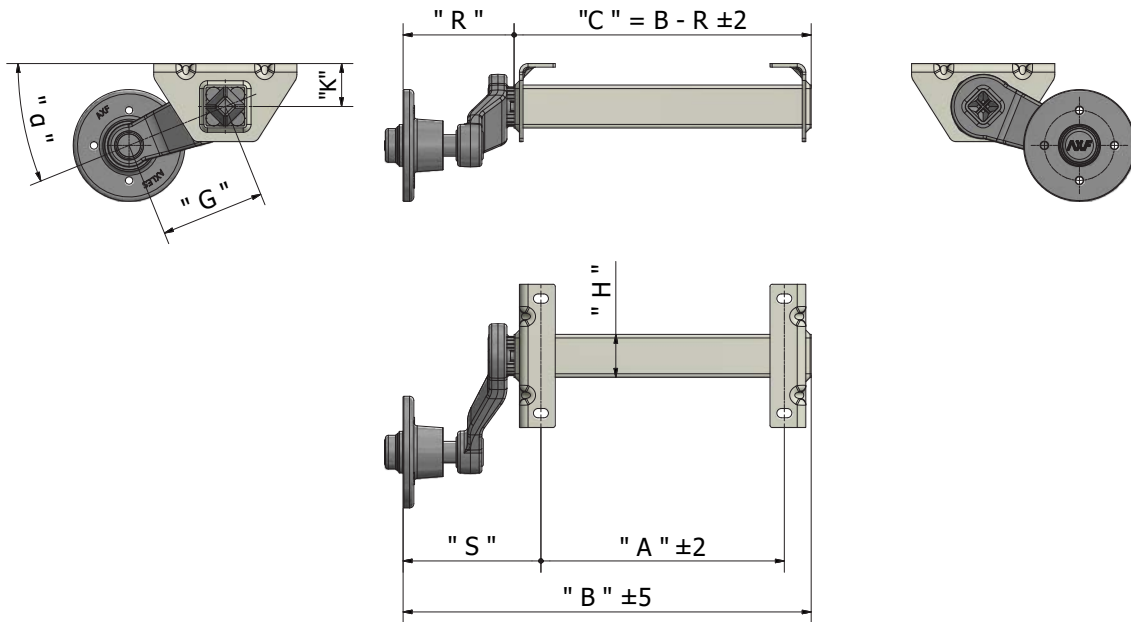
*CONSIGLIATO / RECOMMENDED

Tutte le dimensioni sono in millimetri / All sizes are expressed in millimeters

STAFFE vedi pag. 10 / BRACKETS see p. 10



SEMIASSALI NON FRENATI
UNBRAKED STUB AXLES

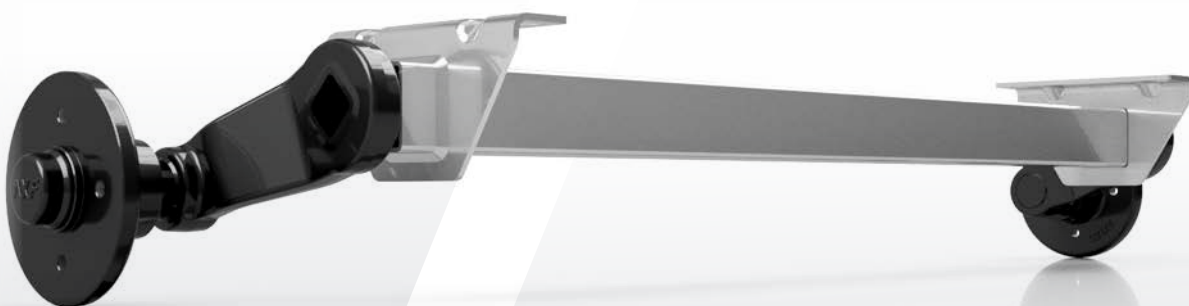


SEMIASSALI NON FRENATI UNBRAKED STUB AXLES

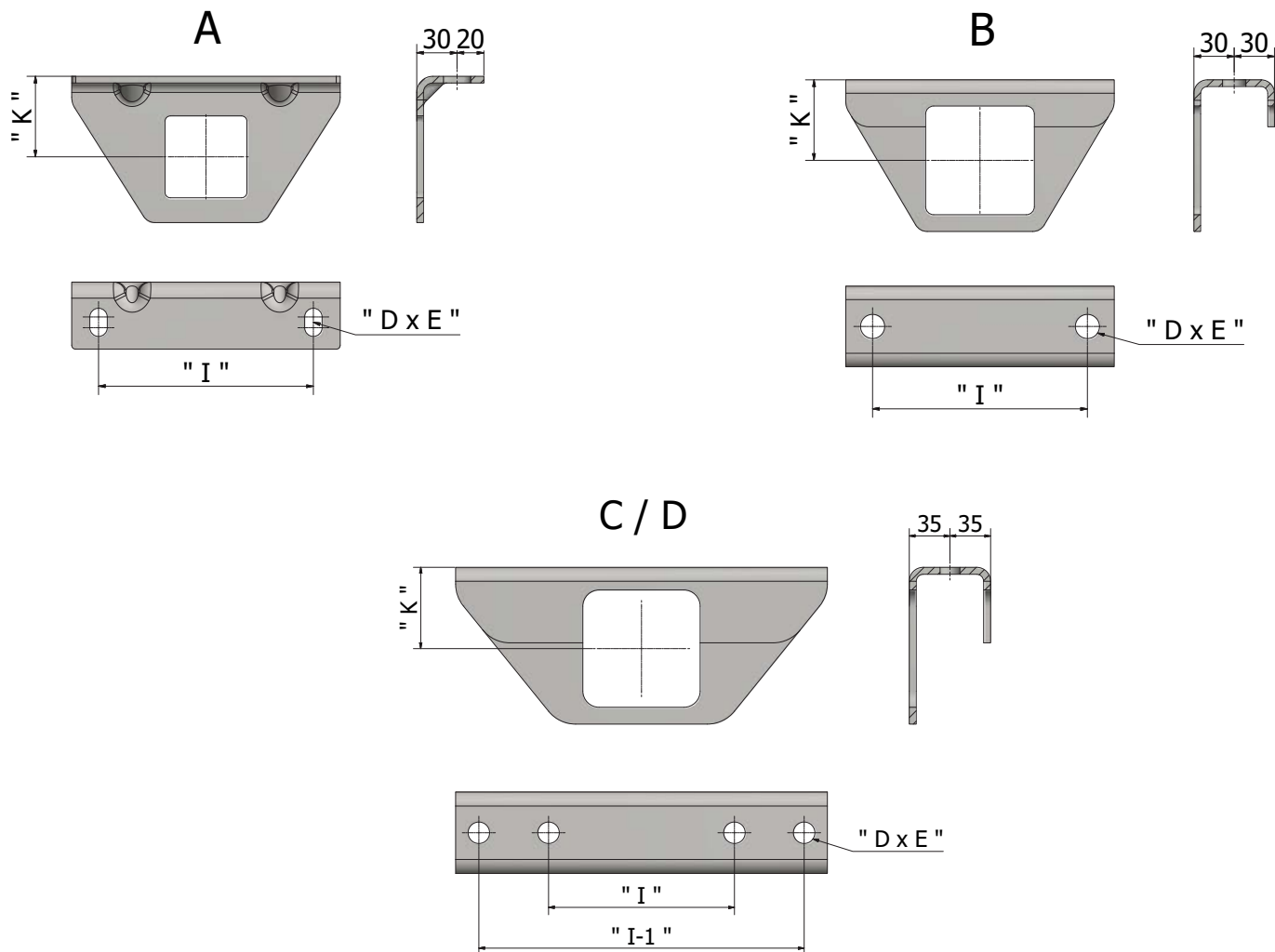
PORTATA LOAD	α	G	K	B _{min}	OFFSET*	H	R	S _{min}	S _{max}	STAFFE BRACKETS	ATTACCO P.C.D
450	22°	145	60	520	0/+30	Q60	155	135	260	A	056 - 058 - 066

*CONSIGLIATO / RECOMMENDED

Tutte le dimensioni sono in millimetri / All sizes are expressed in millimeters
STAFFE vedi pag. 10 / BRACKETS see p. 10



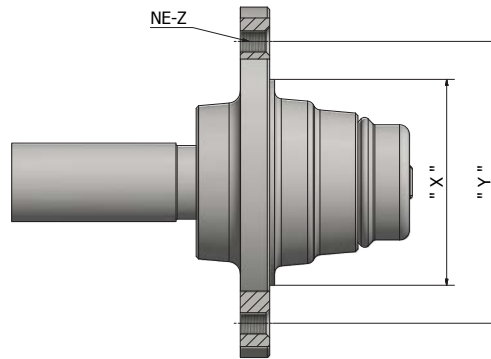
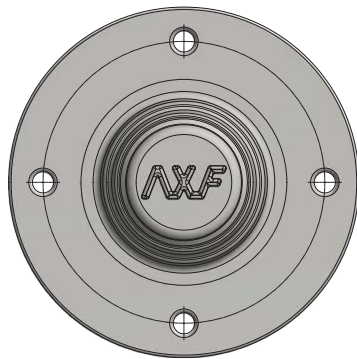
STAFFE BRACKETS



STAFFE BRACKETS

RIF. REF.	I	I-1	K	DxE
A	160	/	60	21x13
B	160	/	60	18
C	160	280	55	18,5
D	160	280	70	18,5

Tutte le dimensioni sono in millimetri / All sizes are expressed in millimeters



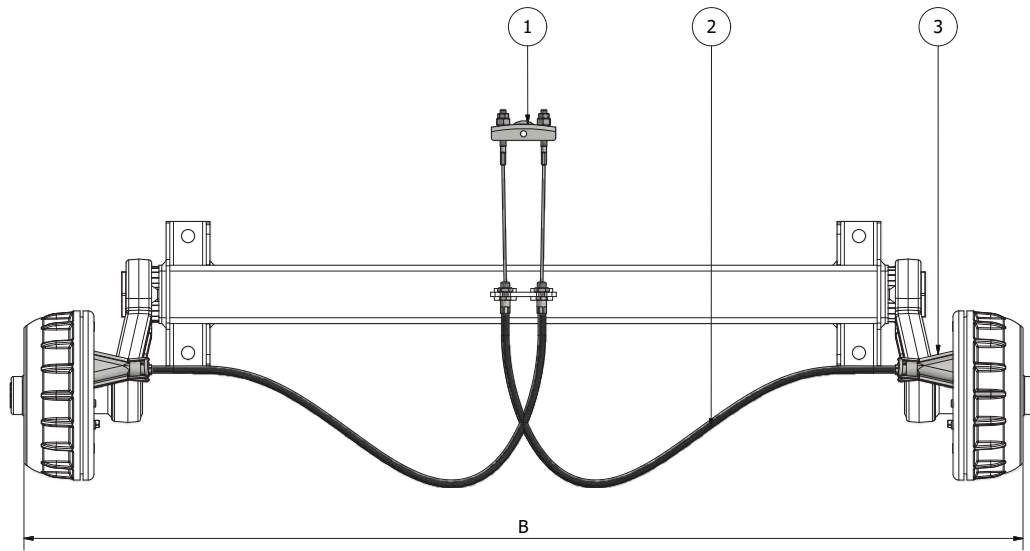
ATTACCHI RUOTA WHEEL P.C.D.

TIPO FISSAGGIO P.C.D. TYPE		X x Y / NE-Z	VITE Z x L SCREW Z x L	DADO NUT	MARCHIO BRAND
A	056	56x100/4-M12 Conical seat 60°	Conical screw ring M12x1,5x24		OPEL BMW VOLKSWAGEN
B	058	58x98/4-M12 Conical seat 60°	Conical screw ring M12x1,5x24		FIAT SEAT
C	066	66x112/5-M12 Spherical screw ring	Spherical screw ring M12x1,5x24		MERCEDES
D	NV	66X114,3/4-M12 Conical seat 60°	Conical screw ring M12x1,5x24		NISSAN VANETTE
E	JC	71X114,3/5-M14 Conical seat 60°	Conical screw ring M14x1,5x24		JEEP CHEROKEE
F	84	84X115/4-M10 Spherical screw ring	Spherical screw ring M10x1,25x24		/
G	84	84X130/4-M14 Conical seat 60°	Conical screw ring M14x1,5x24		NAUTILUS
H	NS	99X139,7/6-M12 Conical seat 60°	Conical screw ring M12x1,5x24		NISSAN TERRANO NISSAN PATROL
L	SK	107X139,7/5-M12 Conical seat 60°	Conical screw ring M12x1,5x24		SUZUKI
M	DKW	84X140/5-M16 Conical seat 60°	Stud M16x1,5x42	Conical nut M16x1,5	DKW MERCEDES
N	93	93X140/5-M14 Spherical seat R14	Spherical seat R14 M14x1,5x24		INTERNATIONAL
N	LN	94X140/5-M14 Conical seat 60°	Conical screw ring M14x1,5x24		LADA NIVA
P	LR	114,3X165,1/5-M16 Conical seat 60°	Stud M16x1,5x42	Conical nut M16x1,5	LAND ROVER
Q	160	160X205/6-M18 Spherical seat R16	Stud M18x1,5x49	Spherical nut M18x1,5	/
X	NO STD		Disponibile su richiesta - Available on request		



CAVI FRENO ASSE SINGOLO

SINGLE AXLE BRAKE CABLE

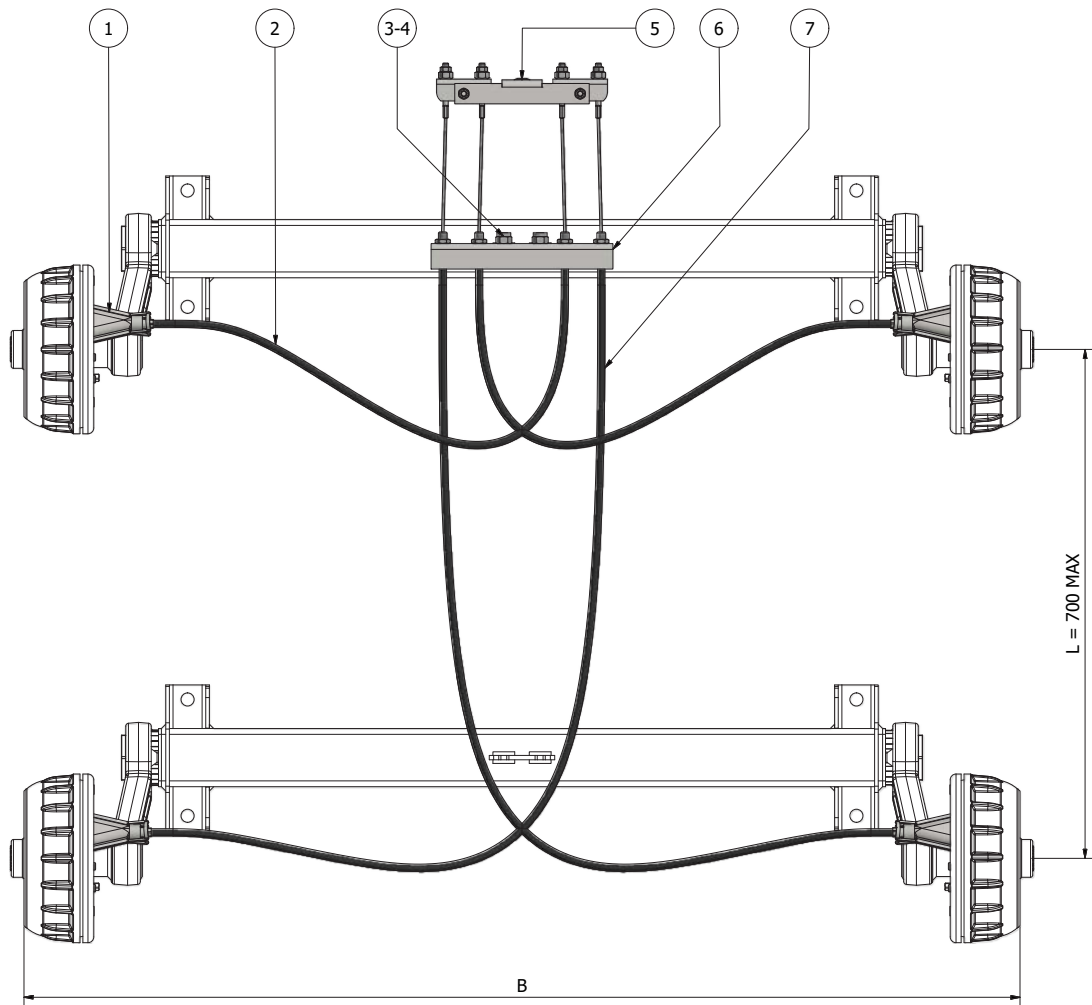


CAVI FRENO ASSE SINGOLO BOWDEN BRAKE CABLE KIT SINGLE AXLE

CODICE CODE	DESCRIZIONE DESCRIPTION	LUNGHEZZA GUAINA SHEATH LENGTH	CARREGGIATA TRACK	
KT27F04591	KIT FUNI SFD-750	750	0	1450
KT27F04553	KIT FUNI SFD-900	900	1451	1700
KT27F04592	KIT FUNI SFD-1050	1050	1701	2000
KT27F04593	KIT FUNI SFD-1200	1200	2001	2400
KT27F04395	KIT FUNI SFD-1300	1300	2400	/

Tutte le dimensioni sono in millimetri / All sizes are expressed in millimeters

- 1 BILANCIERE - BALANCE BAR
- 2 TIRANTE - CABLE
- 3 MEZZO CONO - SHELL



CAVI FRENO ASSALI IN TANDEM BOWDEN BRAKE CABLE KIT TANDEM AXLES

CODICE CODE	DESCRIZIONE DESCRIPTION	LUNGHEZZA GUAINA SHEATH LENGTH		CARREGGIATA TRACK	
		ANTERIORE FRONT	POSTERIORE REAR		
KT27F04594	KIT FUNI TANDEM SFD-750/1200	750	1200	0	1450
KT27F04754	KIT FUNI TANDEM SFD-900/1300	900	1300	1451	1700
KT27F04755	KIT FUNI TANDEM SFD-1050/1480	1050	1480	1701	2000
KT27F04812	KIT FUNI TANDEM SFD-1200/1600	1200	1600	2001	2400
KT27F04823	KIT FUNI TANDEM SFD-1480/1750	1480	1750	2601	/

Tutte le dimensioni sono in millimetri / All sizes are expressed in millimeters

- 1 MEZZO CONO - SHELL
- 2 TIRANTE ANTERIORE - FRONT CABLE
- 3,4 VITI DADI - SCRWWS NUTS
- 5 BILANCIERE - BALANCE BAR
- 6 PIASTRA - PLATE
- 7 TIRANTE POSTERIORE - REAR CABLE



ATTACCHI SFERICI
REPULSORI
RUOTINI

COUPLING HEADS
OVERRUN DEVICES
JOCKEY
WHEELS

AXF

AXLES DIVISION

Fig. "1"

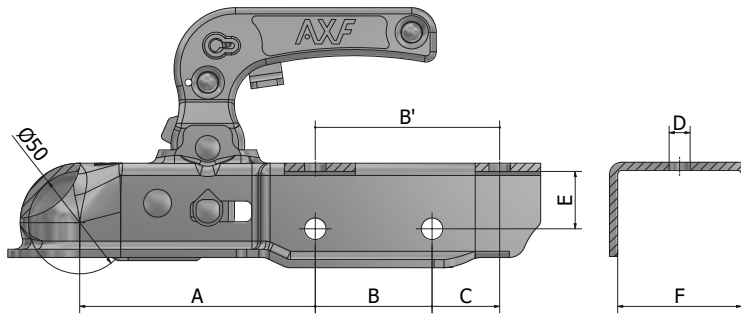


Fig. "2"

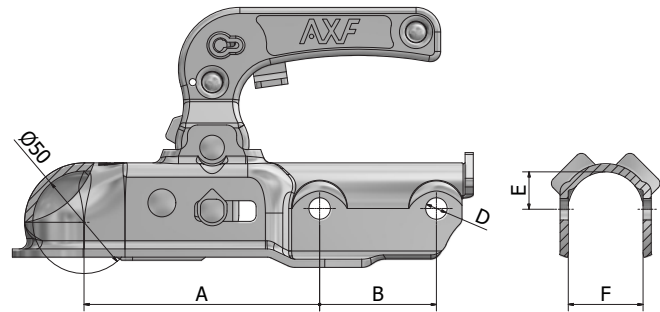
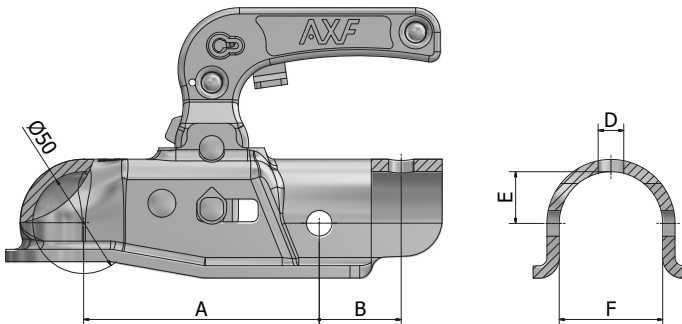
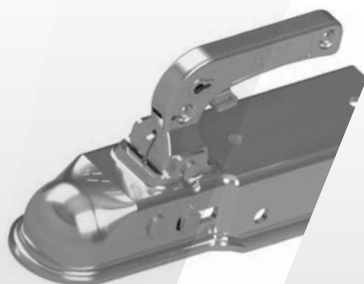


Fig. "3"

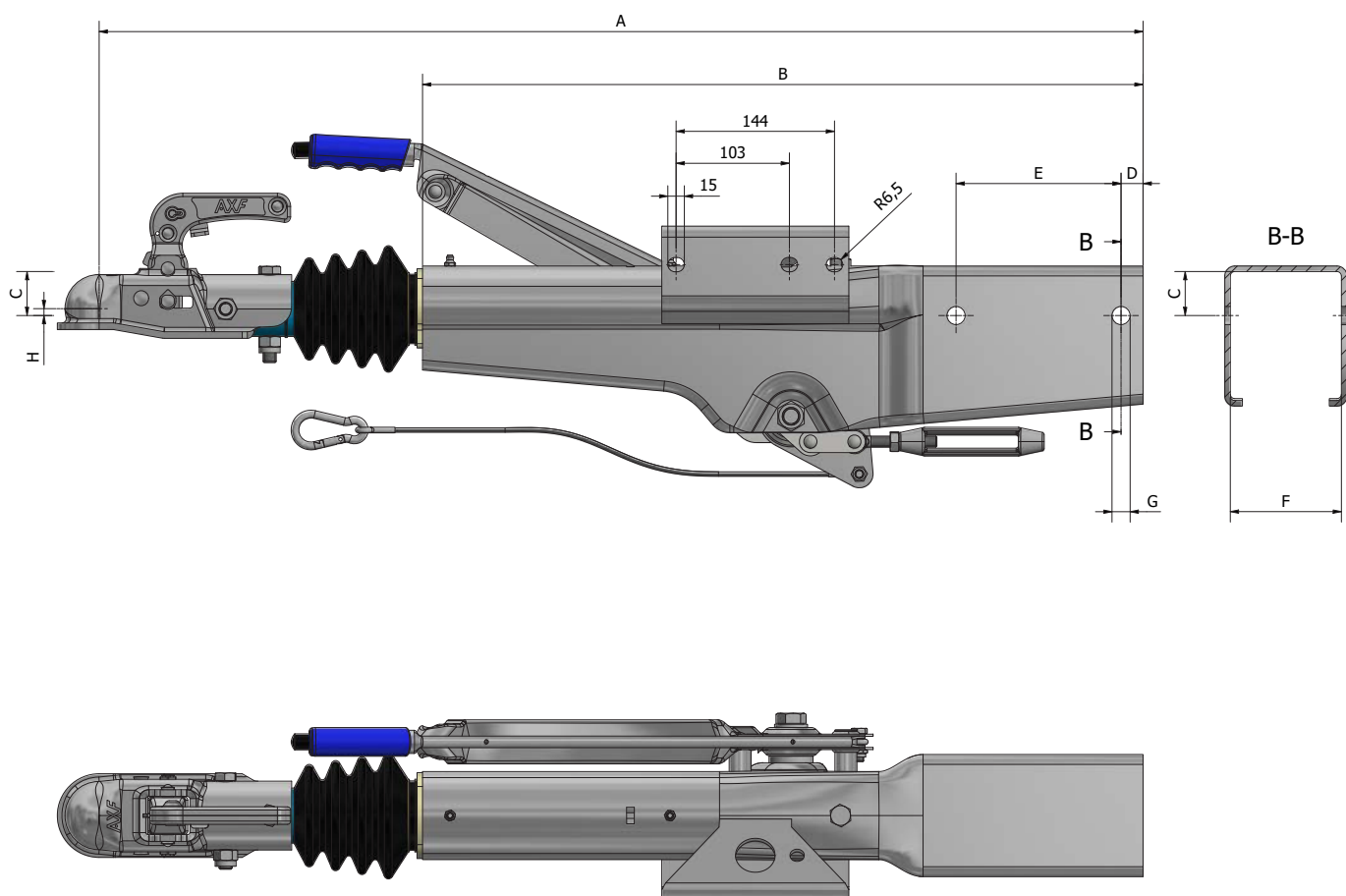


ATTACCHI SFERICI COUPLING HEADS

CODICE CODE	TIPO TYPE	FIG.	PORTATA LOAD [Kg]	"S" [Kg]	"D" [Kn]	A [mm]	B [mm]	C [mm]	D [mm]	E [mm]	F [mm]	N. OMOLOGAZIONE APPROVAL NR.
7110A06236	GE 10-5	1	1000	75	9,6	115	90 (B')	/	10,5	/	50,5	55R-016475
7110A06237	GE 10-6	1	1000	75	9,6	115	57	33	10,5	28	60,5	55R-016475
7110A06238	GE 10-T	2	1000	75	9,6	115	57	/	10,5	18,5	36,5	55R-016475
7115A06239	GE 15-T	2	1500	100	14,1	115	57	/	10,5	18,5	36,5	55R-016477
7128A06240	GE 25-T	3	2800	120	25,26	115	40	/	12,5	25,25	50,5	55R-016476

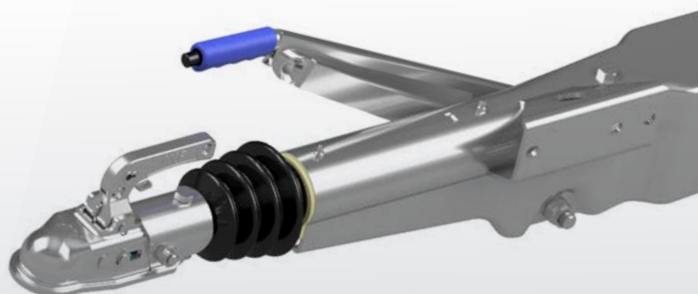


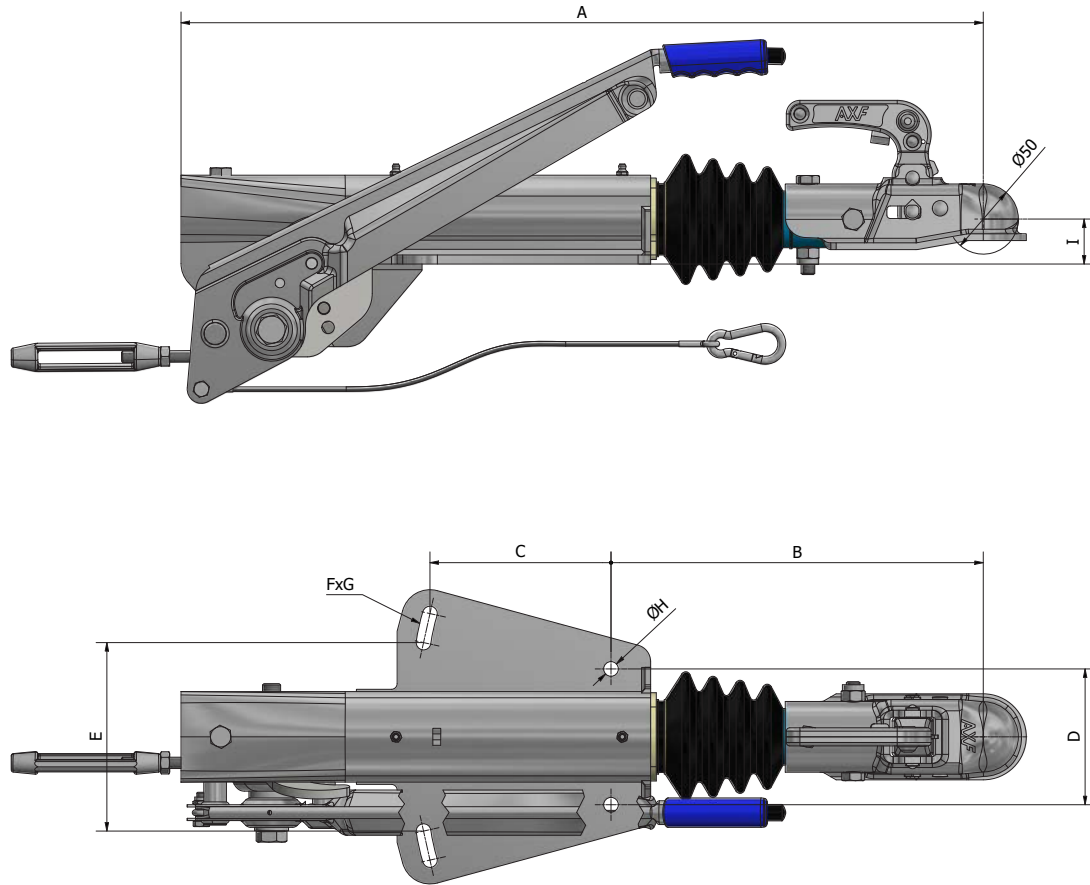
REPULSORE QUADRO OVERRUN DEVICE SQUARE



REPULSORE QUADRO OVERRUN DEVICE SQUARE

CODICE CODE	TIPO TYPE	PORTATA LOAD [Kg]	S [Kg]	D [Kn]	A [mm]	B [mm]	C [mm]	D [mm]	E [mm]	F [mm]	ØG [mm]	H [mm]	N. OMOLOGAZIONE APPROVAL NR.	
RR10003460	TQ	650	1000	100	14,06	805	505	35	20	120	71	13,5	5	55R-016433
RR15003222	TQ	900	1500	100	14,06	805	505	35	20	120	71	13,5	5	55R-016433
RR18001061	TQ2	950	1800	100	26,26	945	655	40	20	150	101	16,5	6	55R-016436
RR28002100	TQ2	1500	2800	100	26,26	945	655	40	20	150	101	16,5	6	55R-016436





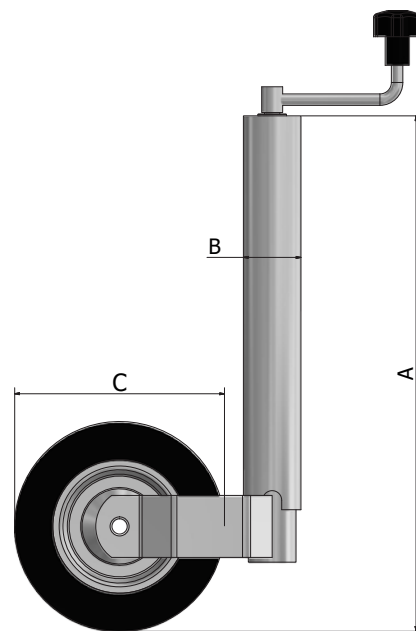
REPULSORE V OVERRUN DEVICE V

CODICE CODE	TIPO TYPE	PORTATA LOAD [Kg]	S [Kg]	D [Kn]	A [mm]	B [mm]	C [mm]	D [mm]	E [mm]	FxG [mm]	ØH [mm]	I [mm]	N. OMOLOGAZIONE APPROVAL NR.
RV10007568	TV	650 1000	75	14,95	605	320	125	100	148	13x18	13X10	28	55R-016435
RV15007570	TV	900 1500	100	14,95	605	320	125	100	148	13x18	13X10	28	55R-016435
RV18001395	TV3	950 1800	100	16,72	705	325	160	120	166	13x26	13	38	55R-016426
RV28002099	TV2	1500 2800	100	25,26	705	325	160	120	166	13x26	13	40	55R-016437



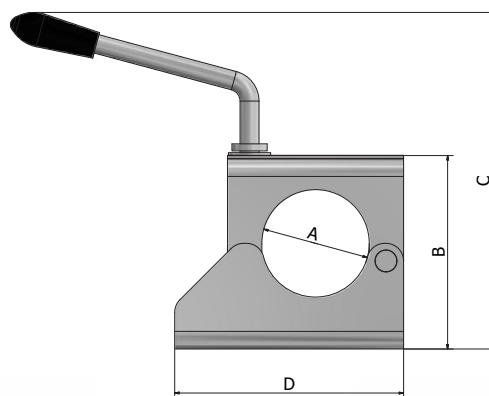


RUOTINI - STAFFE JOCKEY WHEELS - BRACKETS



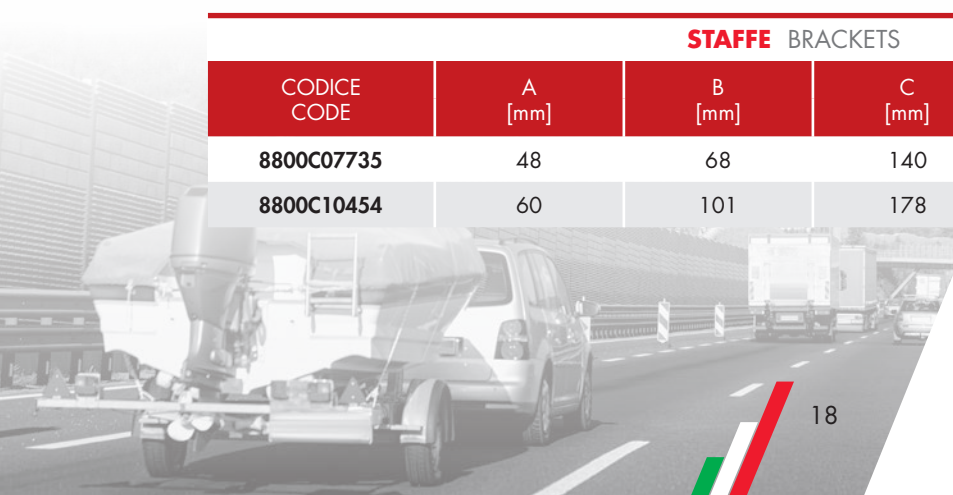
RUOTINI JOCKEY WHEELS

CODICE CODE	PORTATA LOAD [Kg]	A [mm]		B [mm]	C [mm]	PESO WEIGHT [Kg]
		MIN	MAX			
8800C07739	150	480	730	48	200	4
8800C10453	300	540	760	60	220	9



STAFFE BRACKETS

CODICE CODE	A [mm]	B [mm]	C [mm]	D [mm]	PESO WEIGHT [Kg]
8800C07735	48	68	140	128	1
8800C10454	60	101	178	128	1,5



SUPPORTO TECNICO TECHNICAL SUPPORT

QUALITÀ, RICERCA E INNOVAZIONE CON LA MASSIMA FLESSIBILITÀ. IL NOSTRO OBIETTIVO? LA COMPLETA SODDISFAZIONE DEL CLIENTE.

Con la nascita della divisione AXF, Frenco inserisce nel proprio organico nuove figure tecniche. Le nuove figure tecniche specializzate con software sempre all'avanguardia, nuovi strumenti di test, la collaborazione del controllo qualità, convalidano i prodotti standard, ne progettano e verificano di nuovi.

La continua ricerca di FRESCO della soddisfazione del cliente è stata trasferita anche nella divisione AXF.

AXF si impegna quotidianamente nella cura e soddisfazione della sua clientela.

La clientela, in fase di studio, può avvalersi del nostro supporto tecnico per l'adeguamento di prodotti esistenti o la progettazione di prodotti studiati ad hoc.

QUALITY, RESEARCH AND INNOVATION WITH THE UTMOST FLEXIBILITY. OUR GOAL? 100% CUSTOMER SATISFACTION.

The birth of the AXF division allowed Frenco to incorporate new technical professionals within its staff.

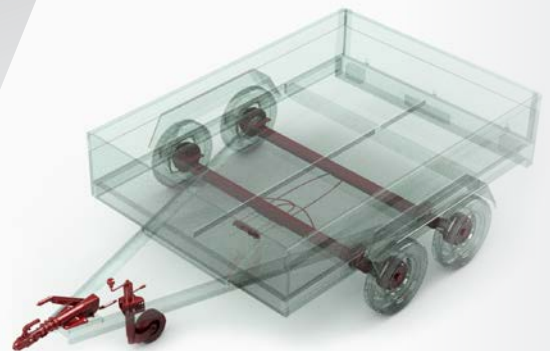
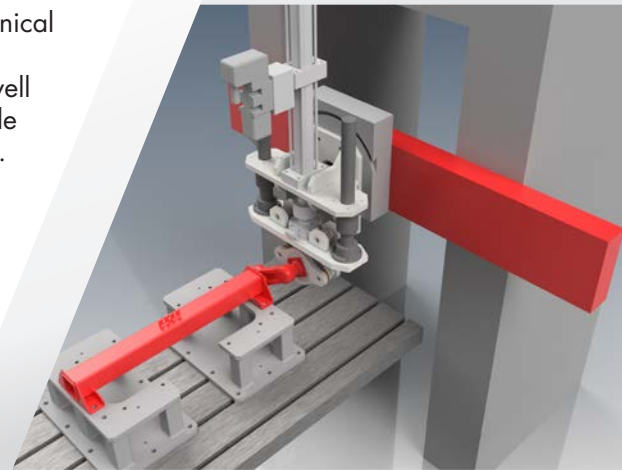
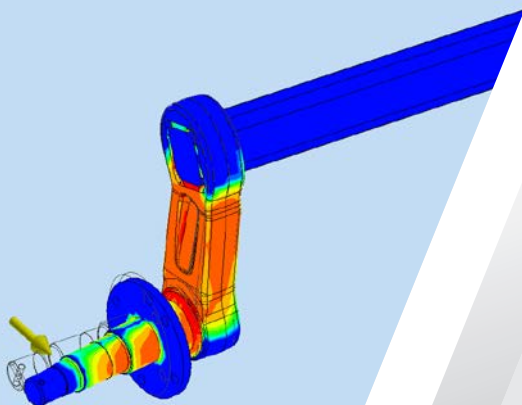
Thanks to the use of cutting-edge software and new testing tools, as well as the collaboration with the quality control department, these high profile professionals can validate standard products and design and test new ones. The AXF division also shares FRESCO'S continuous desire to achieve customer satisfaction.

Every day, AXF strives to satisfy and take care of its customers.

During the design study phase, customers can rely on our technical support to better adapt existing products or to design customized ones.

Tipico Fattore di sicurezza
Unità: -#
12/11/2017, 10:38:54

35 Max
15,75
12,5
11,25
10
8,75
7,5
6,25
5
3,75
2,5
1,25
0,26 Min



The logo consists of the letters 'AXF' in a bold, sans-serif font. The letter 'A' is black, 'X' is red, and 'F' is black. The 'X' is positioned between the 'A' and the 'F', and its vertical strokes are slightly offset from the 'A' and 'F'.

AXLES DIVISION

www.axf-axles.com

The logo consists of the word 'FRESCO' in a bold, sans-serif font. The letter 'O' is red, while the other letters are black.

Fresco S.r.l. - Via Indipendenza 5/7 - 25018 Novagli di Montichiari (BS) ITALY
Tel. +39 030 9981758 - Fax +39 030 9981779 - info@frecosrl.it - www.fresco-italy.com